

CLSC

Hoisting Grips for Coaxial Cable and Elliptical Waveguide

PRE LACED Model

READ ALL WARNINGS AND INSTRUCTIONS BEFORE INSTALLATION

WARNING

The following warnings alert you to possible dangers in misusing this product. Failure to obey a warning may result in injury or death to you or to others.

Do not use one hoisting grip for hoisting two or more cables or waveguides. This can cause the hoisting grip to break or the cables or waveguides to fall.

Do not use the hoisting grip for lowering cable or waveguide. Snagging of the cable or waveguide may loosen the grip and possibly cause the cable to waveguide to sway or fall.

Do not reuse hoisting grips. Used grips may have lost elasticity, stretched, or become weakened. Reusing a grip can cause the cable or waveguide to slip, break, or fall.

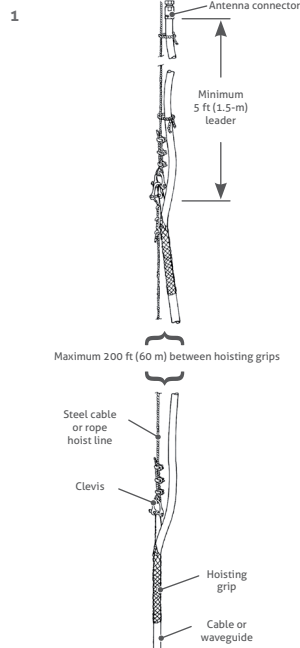
Use hoisting grips at intervals of no more than 200 ft (60 m).

Make sure that the proper hoisting grip is used for the cable or waveguide being installed. Slippage or insufficient gripping strength will result if you are using the wrong hoisting grip. Refer to the table below.

DESCRIPTION

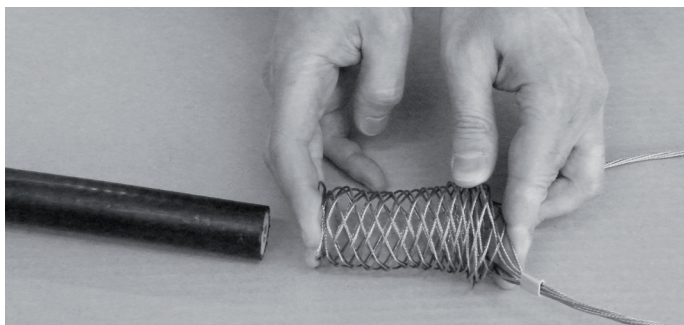
Hoisting grips are designed for hoisting cable or waveguide safely up a tower so that mechanical connection to an antenna can be made. The grip is closed and must be inserted on the cable or waveguide.

When the cable or waveguide is in position and fastened to the tower members, the hoist line can be removed. The hoisting grip may then be either attached to the tower as additional support for the cable or waveguide or removed.



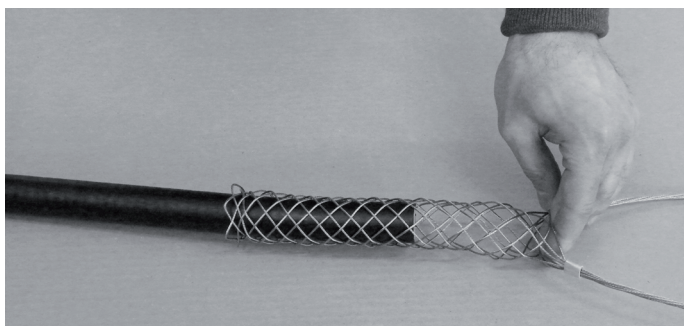
1

Place the hoisting grip at the proper location on the cable or waveguide as shown in Figure 1. Allow a sufficient length of cable or waveguide leader between the connector and the grip to reach the antenna input when hoisting is completed.



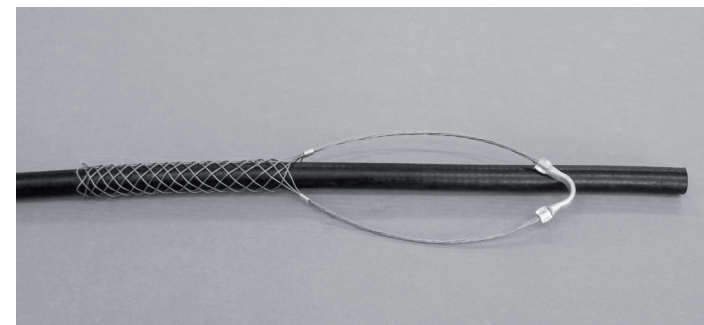
2

Press the Hoisting Grip to allow insert on cable.



4

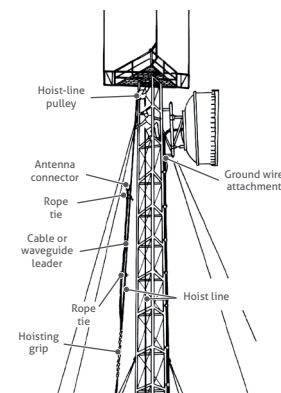
Push the Hoisting Grip towards the cable.



4

Slide the Hoisting Grip into position as shown.

5



5

Attach the hoist line to the grip as shown in Figure 5. Tie the cable or waveguide leader to the hoist line so that the leader does not dangle. Apply tension slowly to the hoist line to allow the hoisting grip to tighten uniformly on the cable or waveguide.

WARNING

Maintain tension on the hoisting grip during hoisting. Loss of tension can cause dangerous movement of the cable or waveguide and result in injury or death to you or others on or near the tower. Also, do not release tension on the grip until after the cable or waveguide has been fastened to the tower members.



Notice: Manufacturer declines any liability or responsibility for the results of improper or unsafe installation, inspection, maintenance, or removal practices.

IST. 016 - 2/11 - A6 - REV. 0



All rights reserved.
Passing on and copying of this document,
use and communication of its contents not
permitted without Fi.Mo.Tec. S.p.A. prior consent.

