

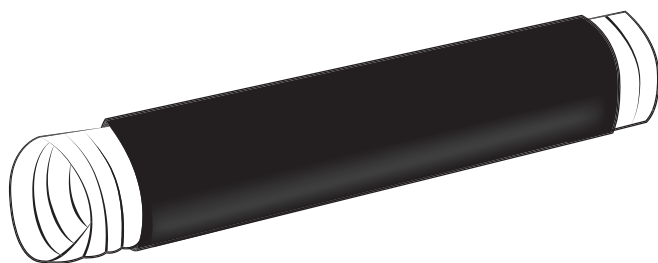
TEF JTA

Cold Shrink Tube

Copyright © Fi.Mo.Tec. S.p.A.
www.fimoworld.com

IST. 051 - REV. 2 - 9/20

INSTALLATION INSTRUCTIONS



⚠️ WARNINGS!

Installation of products must be performed by qualified, trained and experienced personnel. Installation personnel must be correctly and safely equipped. Mounting instructions and warnings must be read prior to installation. Warnings alert you to possible dangers about improper use of product. Failure to observe warnings may result in injury or death to you or others.



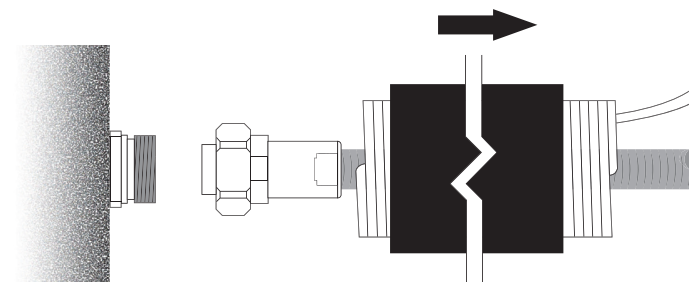
Fi.Mo.Tec. S.p.A.
is certificated ISO 9001
and RoHS DIRECTIVES
compliant.



All rights reserved.
Passing on and copying of
this document, use and communication of its contents
not permitted without Fi.Mo.
Tec. S.p.A. prior consent.

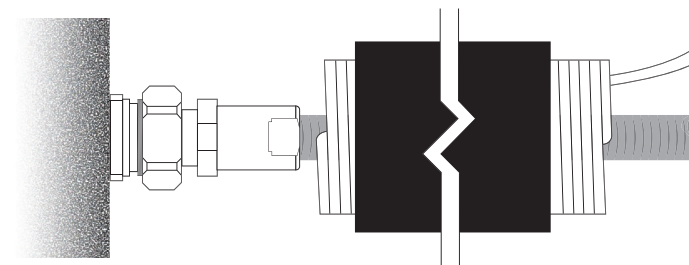


1

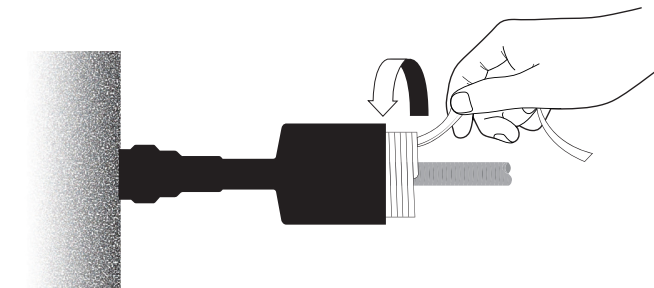


Slip in the cold shrink tube before connection. Then connect the 1/2" jumper to antenna.

2

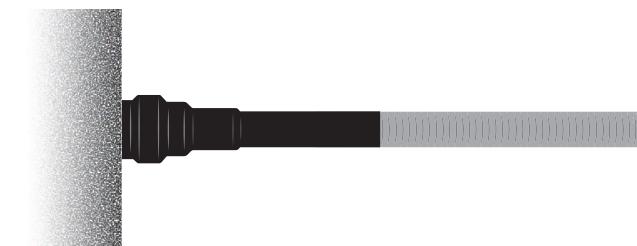


3



Counterclockwise rotate and pull out the plastic core, the tube will shrink.

4



Note:

1. Check antenna interface for compatibility with cold shrink
2. Remove all moisture from cables and connectors before attaching cold shrink material on foam dielectric cable
3. Don't attach cold shrink materials to air dielectric cable or cable markers

Note: Installation of this product should only be performed by trained, qualified and experienced personnel. Installation instructions for this product should be read thoroughly before installation is performed. The manufacturer and supplier of this products disclaim any liability or responsibility for the results of improper or unsafe installation practice.

TEF Cold Shrink Tubes MUST be installed within one year from manufacturing date reported on product label.