

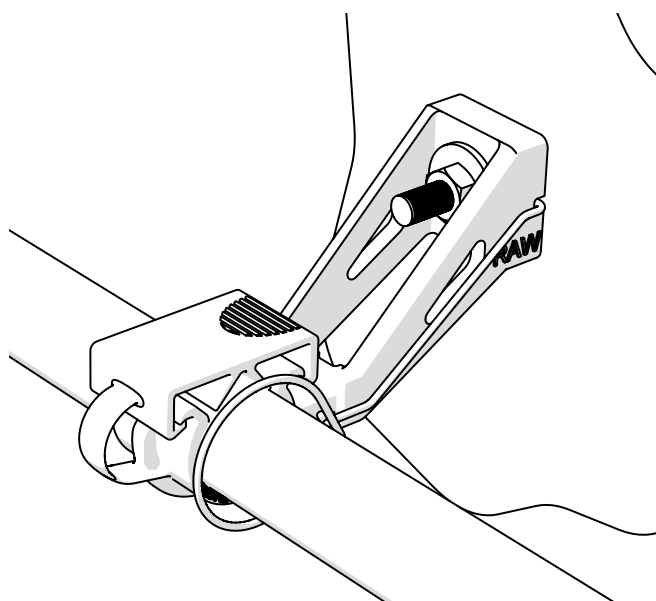
# RAW+MF/MFI

## Cable Clamps for Radiating Cables

Copyright © Fi.Mo.Tec. S.p.A.  
www.fimoworld.com

IST. 043 - REV. 0 - 02/15

### INSTALLATION INSTRUCTIONS



### ⚠️ WARNINGS!

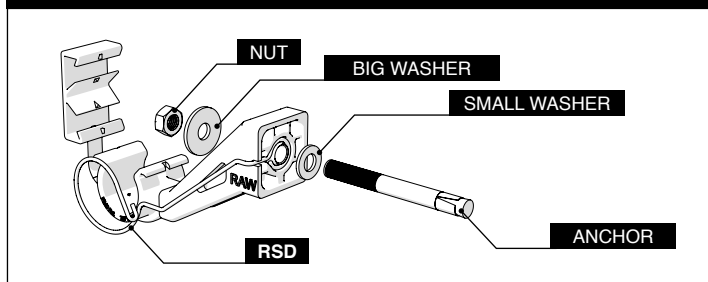
Installation of products must be performed by qualified, trained and experienced personnel. Installation personnel must be correctly and safely equipped. Mounting instructions and warnings must be read prior to installation. Warnings alert you to possible dangers about improper use of product. Failure to observe warnings may result in injury or death to you or others.



Fi.Mo.Tec. S.p.A.  
is certificated ISO 9001  
and RoHS DIRECTIVES  
compliant.

All rights reserved.  
Passing on and copying of  
this document, use and communication of its contents  
not permitted without Fi.Mo.  
Tec. S.p.A. prior consent.

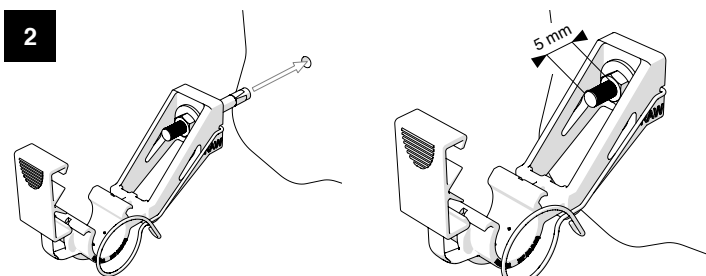
BEFORE INSTALLATION SET RAW AND ITS DEVICES AS PER BELOW IMAGE



1

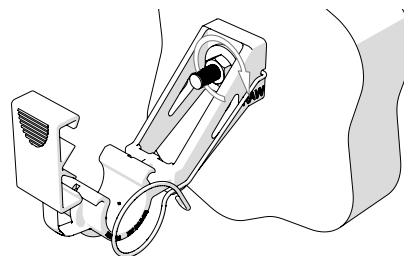
Drill a Ø 6-8mm hole in accordance with anchor MF/MFI Ø - Clean the hole

2



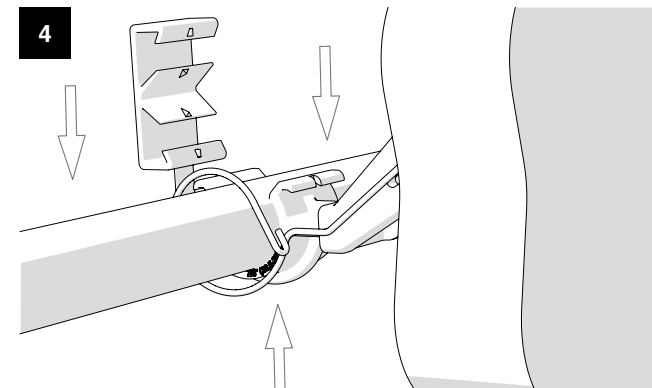
Insert the **MF/MFI** anchor in the hole with the **RAW** clamp, leaving 5mm prominent from nut. If necessary use a hammer to facilitate insertion

3



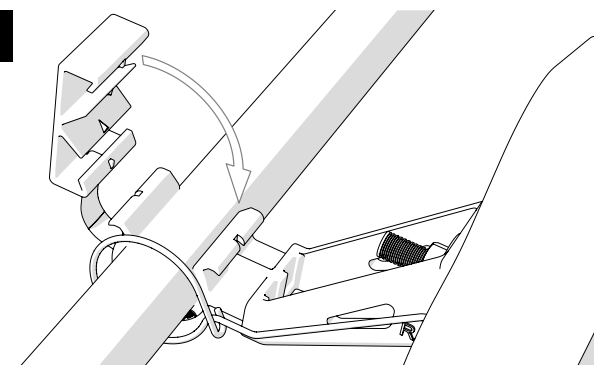
Tighten the nut (4-5 Nm) for complete lock

4



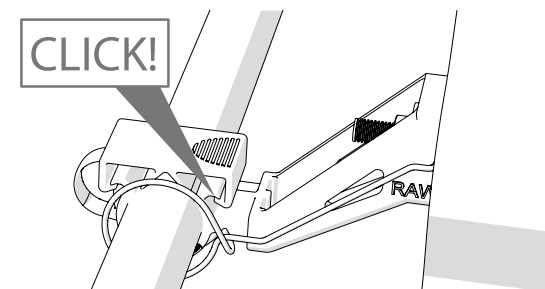
Insert cable into **RSD** security device\*, and then insert cable into **RAW** clamp contrasting from below

5



Close **RSD** around the cable\*, place **RAW** outer bracket end

6



Close **RAW** bracket over cable  
with a **CLICK!** at inner end

\*Where **RSD** provided

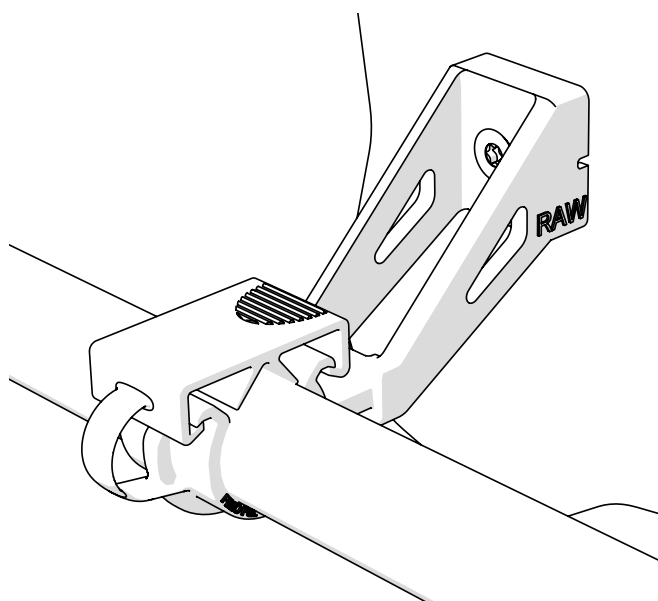
# RAW+R8-80/R10-80

## Cable Clamps for Radiating Cables

Copyright © Fi.Mo.Tec. S.p.A.  
www.fimoworld.com

IST. 043 - REV. 0 - 02/15

### INSTALLATION INSTRUCTIONS



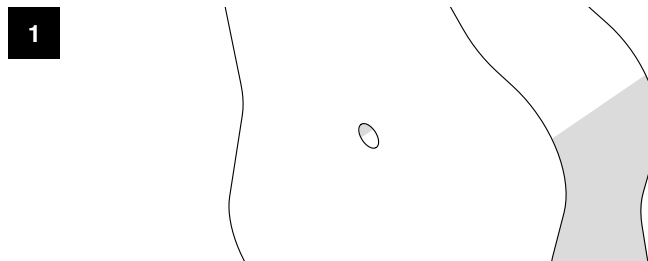
### ⚠ WARNINGS!

Installation of products must be performed by qualified, trained and experienced personnel. Installation personnel must be correctly and safely equipped. Mounting instructions and warnings must be read prior to installation. Warnings alert you to possible dangers about improper use of product. Failure to observe warnings may result in injury or death to you or others.

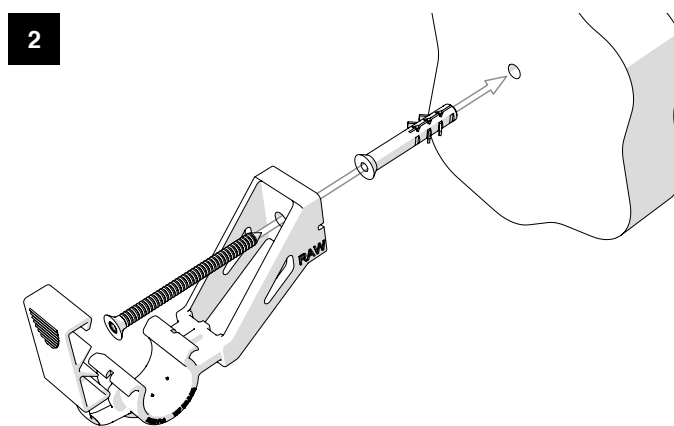


Fi.Mo.Tec. S.p.A.  
is certificated ISO 9001  
and RoHS DIRECTIVES  
compliant.

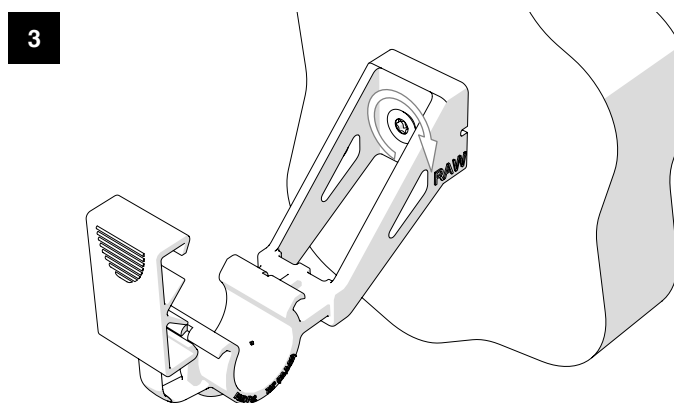
All rights reserved.  
Passing on and copying of  
this document, use and communication of its contents  
not permitted without Fi.Mo.  
Tec. S.p.A. prior consent.



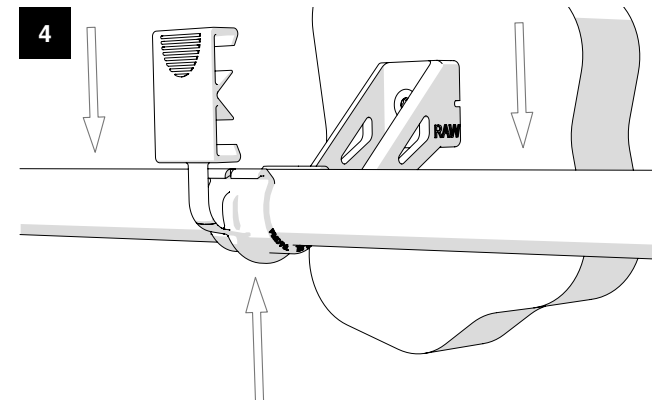
Drill a Ø 8-10mm hole in accordance with plug Ø - Clean the hole



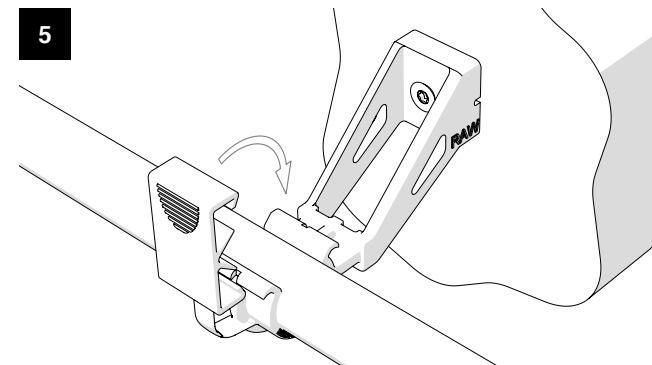
Insert **R8-80 / R10-80** plug in the hole



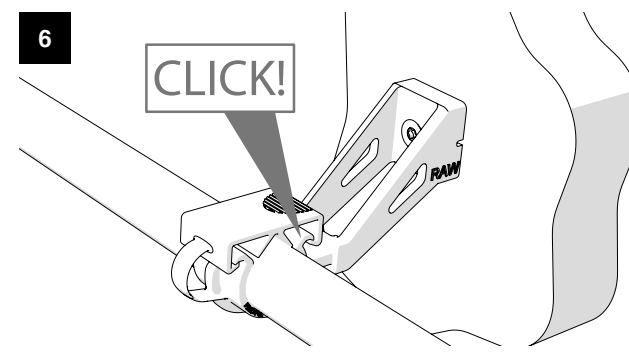
Tighten the screw (4-5 Nm) for complete lock



Insert cable into **RAW** clamp contrasting from below



Place **RAW** outer bracket end



Close **RAW** bracket over cable with a **CLICK!** at inner end