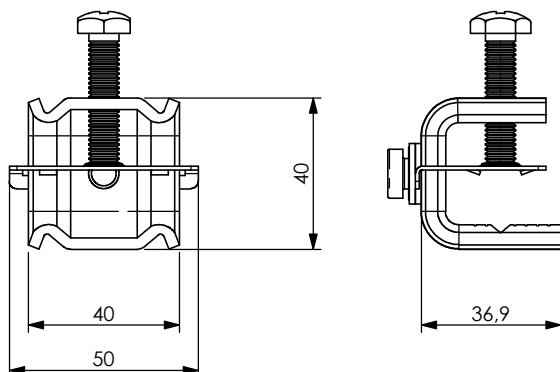


# PRODUCT DATA SHEET

## A) SPECIFICATIONS

- 1 Stainless steel VCI 8x35 screw
- 2 Stainless steel bow MCI M8 Aisi 304
- 3 Stainless steel pressure plate PPV3-8
- 4 Stainless steel VCI 8x10 screw
- 5 Stainless steel elastic washer REI 8
- 6 Stainless steel pfalt washer RPI8/15



## B) RESISTANCE TESTS

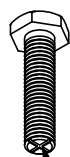
UV Test BS-ISO 105-B06  
Vibration test conforming to UNI 60068-2-6

## C) PACKAGING INFORMATION

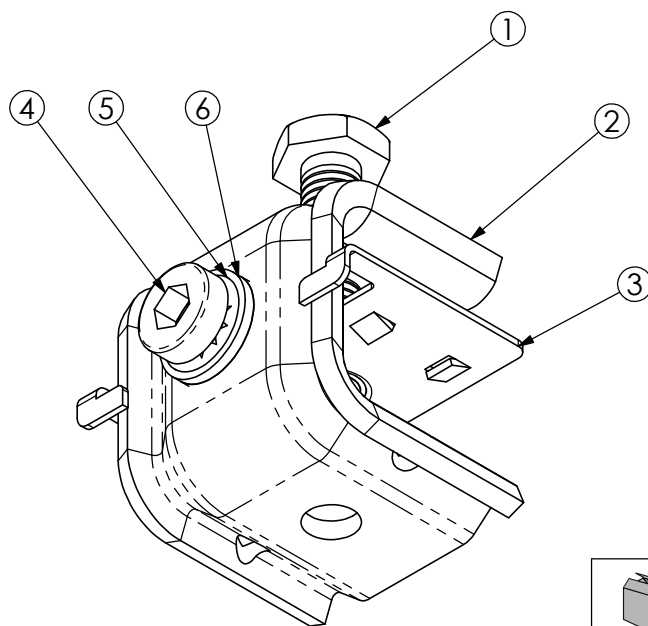
Packing in boxes.  
Label indicating:  
product code, article, quantity,  
production batch,  
FIMO logo and figure.  
( Customer code on request ).

## D) MOUNTING INSTRUCTIONS

On request





detail of self-locking screw



code	<b>6115231003</b>
article	MCM/8V

20	0.1332kg

RI	DATE	DR	DATE	AP	Description:  <b>MCM/8V=compact clamp 8-25 VCI+REI</b>
02					
01					
00	17/06/2015	E.B.	17/06/2015	A.V.	
	1 <sup>ST</sup> EMISSION				
					Use: Enbloc bidirectional mini clamp with a patented ribbed, self centring pressure plate and patented self-locking M8 screw

FI.MO.TEC. S.p.a. reserves the right to modify the technical specifications without prior notice, according to the technical progress  
Copyright FI.MO.TEC. S.p.a. All rights reserved.