

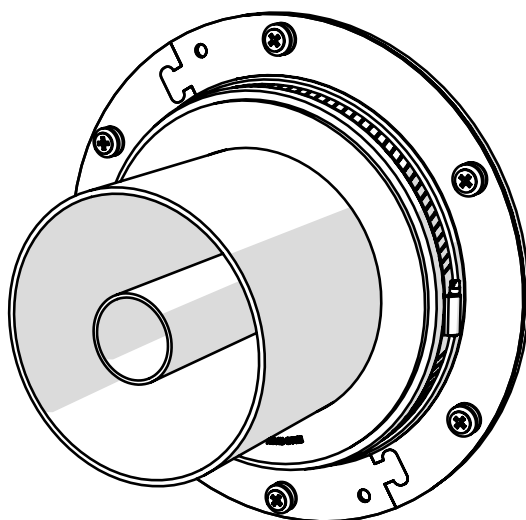
PTR 200/185 RO

Wall Entries

Copyright © Fi.Mo.Tec. S.p.A.
www.fimoworld.com

IST. 047 - REV. 0 - 01/15

INSTALLATION INSTRUCTIONS



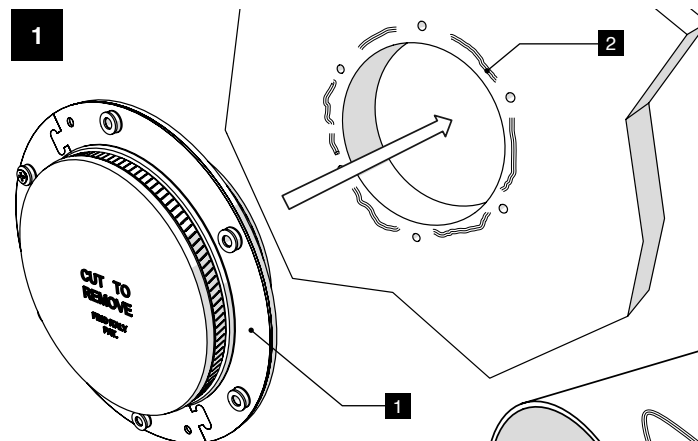
⚠ WARNINGS!

Installation of products must be performed by qualified, trained and experienced personnel. Installation personnel must be correctly and safely equipped. Mounting instructions and warnings must be read prior to installation. Warnings alert you to possible dangers about improper use of product. Failure to observe warnings may result in injury or death to you or others.

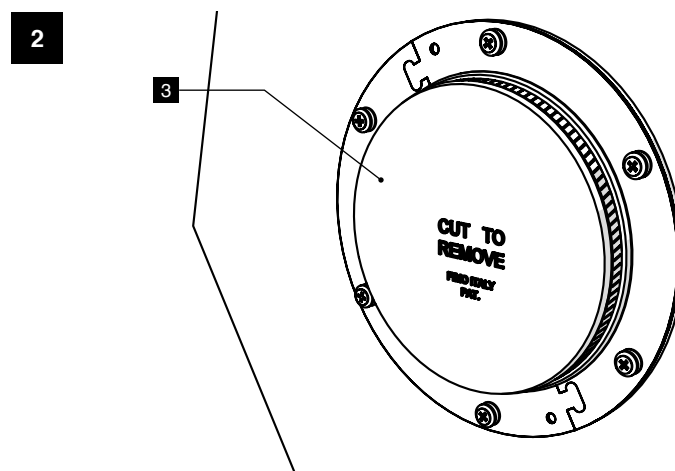


Fi.Mo.Tec. S.p.A.
is certificated ISO 9001
and RoHS DIRECTIVES
compliant.

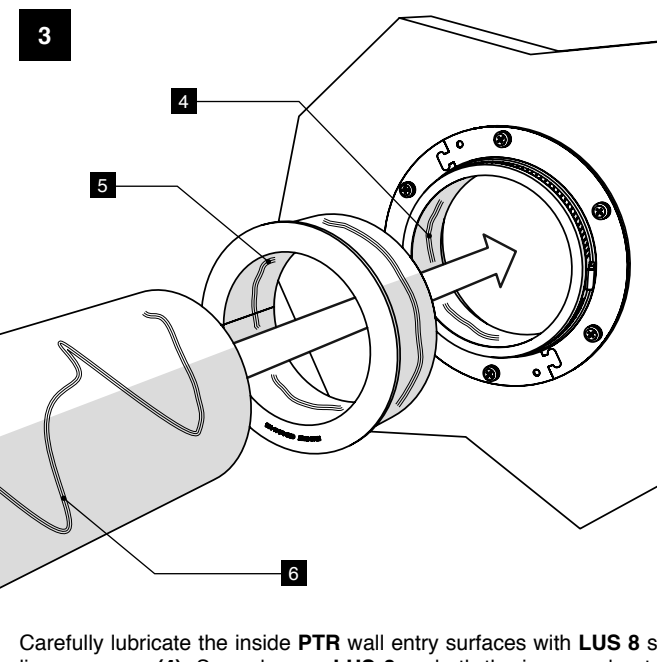
All rights reserved.
Passing on and copying of
this document, use and com-
munication of its contents
not permitted without Fi.Mo.
Tec. S.p.A. prior consent.



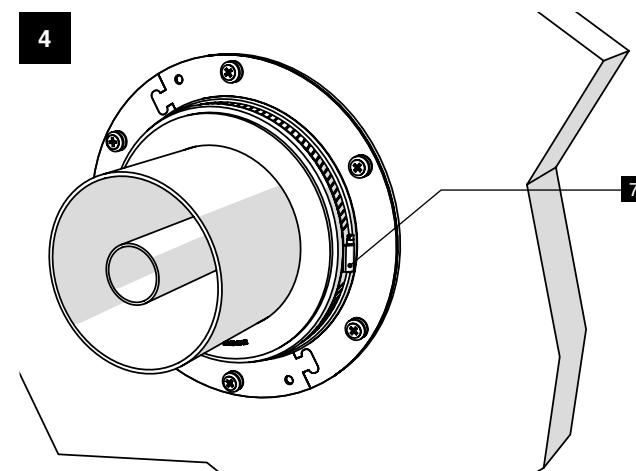
Drill a round hole of $\varnothing 200 \div 205$ mm into the wall with a core bit. Place the **PTR (1)** in the right position and fix it to the wall. Should the wall surface be rough, put some **BUT 6 (2)** butilic putty or some silicone grease between wall and **PTR**.



Remove the temporary protection sheet (3).



Carefully lubricate the inside **PTR** wall entry surfaces with **LUS 8** silicone grease (4). Spread some **LUS 8** on both the inner and outer surfaces of the **GRR (5)** round reduction cushion; lubricate the cable externally (6). Insert the **GRR** reduction cushion in the **PTR** wall entry, insert the cable in the **GRR** round reduction cushion and carefully place it inside the **PTR** wall entry.



For the final sealing, tightly lock the stainless steel hose clamp (7).