

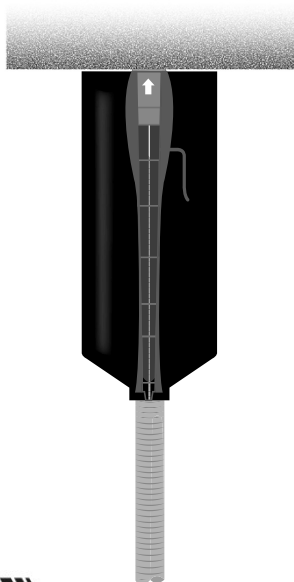
WPE JTA

Waterproofing Enclosure Jumper to Antenna

Copyright © Fi.Mo.Tec. S.p.A.
www.fimoworld.com

IST. 052 - REV. 0 - 11/15

INSTALLATION INSTRUCTIONS



⚠️ WARNINGS!

Installation of products must be performed by qualified, trained and experienced personnel. Installation personnel must be correctly and safely equipped. Mounting instructions and warnings must be read prior to installation. Warnings alert you to possible dangers about improper use of product. Failure to observe warnings may result in injury or death to you or others.



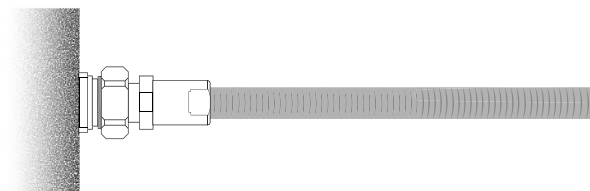
Fi.Mo.Tec. S.p.A.
is certified ISO 9001
and RoHS DIRECTIVES
compliant.



All rights reserved.
Passing on and copying of
this document, use and communication of its contents
not permitted without Fi.Mo.
Tec. S.p.A. prior consent.

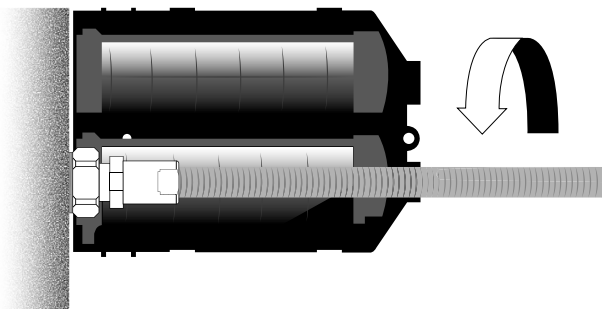


1



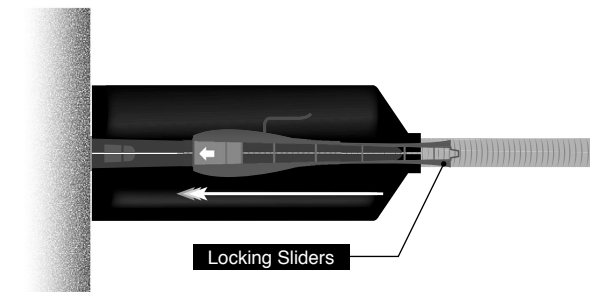
Connect Jumper to Antenna.

2



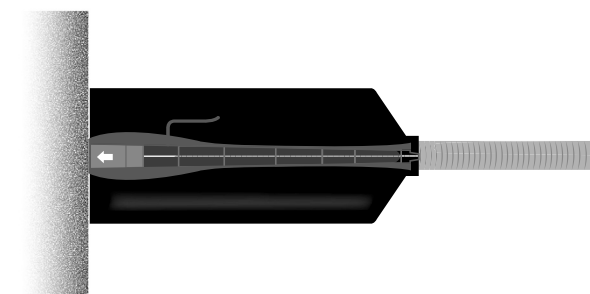
Cover the connector joint with the WPE JTA

3



Slide in the Locking Slider.
You will hear a "CLICK" sound when fitted properly.

4



Done!