



# KNOW-HOW

Architectural camouflage



Tome 1

We are delighted to present a broad range of our achievements in architectural and landscape camouflage in the field of mobile sites.

This booklet focuses on the most successful integrations carried out throughout France, with the goal of preserving the landscape.

It cannot be exhaustive, as the fields of application are varied thanks to the architectural heritage built over centuries across the national territory.

This booklet is intended for all stakeholders involved in integration: mobile network operators, project managers and developers, architects, property owners, local authorities, and anyone concerned with the preservation of built and landscape heritage.

We hope it will inspire reflection, studies, and projects.

## Table of contents

- Antenna integration design 4
- Our installers in action 12
- 10 year warranty on cladding 17
- Types of integrations:
  - Chimneys 19
  - Visual barriers 45
  - Edicules 53
  - Tensioned fabrics 63
  - Rooftops 67
  - Louvers 73
  - Bell Towers, Steeple Tips & Weathercocks 85
  - Casings 99
  - Special projects 113
- History 126

# Antenna integration design



## Kingersheim

Built in 1952, the water tower in Kingersheim needed to be brought up to current standards. Highly visible and located at the entrance of the city on the edge of a forest, the tower required a design that would enhance its appearance while blending into the environment. The landscape integration project proposed by the architect involved adding six composite slats per facade of the water tower, totaling seventy-two slats each over five meters tall and in three different widths. Fimo designed each facade panel of six slats as a single, ready-to-install unit. The installation of all 72 slats was completed in one week.



## IN BRIEF

1320 hours of production

4 months of manufacturing

800 kg per panel face

10 tonnes total for the complete installed structure.

450 m<sup>2</sup> of developed cladding surface

5 m in height



## Assembly principle

The assembly is carried out using pre-assembled panels of six slats prepared in the workshop. These panels are supported by a specially developed spreader beam. Anchoring and fastening at the top of the water tower were done by two rope access technicians.

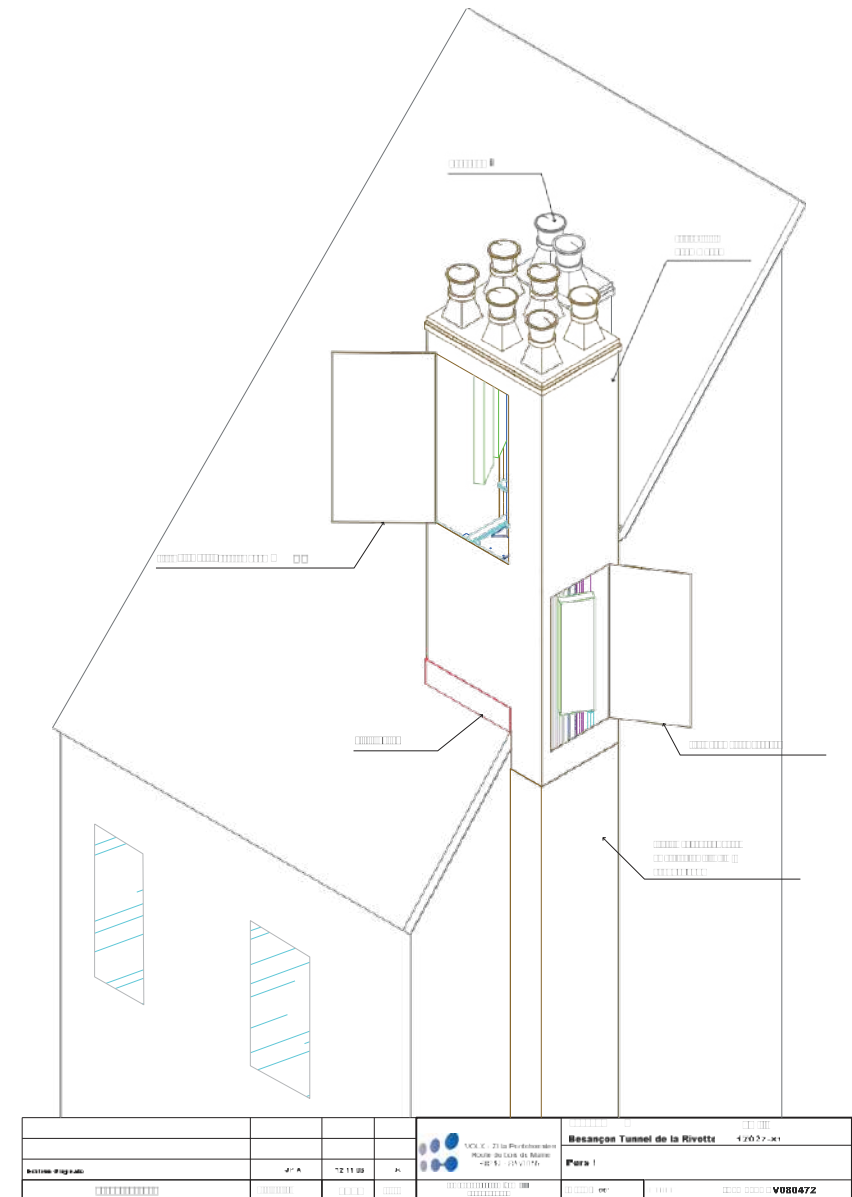






## Besançon

This project, located in a heritage protection zone (ZPPAUP) and part of the UNESCO World Heritage designation for part of Besançon, was executed with the utmost care. Developed for two operators with four antennas and one microwave antenna integrated, this faux chimney, fixed to an existing chimney base on the edge of an old building's gable, had to completely blend in with the existing architecture. It was fitted with caps identical to those already on site and aged to match the real chimneys. The integration of the cable run down the side added the final touch to this complex geometry project.



## Project view - SE perspective



## Tarbes

Located in the heart of Tarbes, this church served as an ideal high point for a mobile phone site. The project involved creating an entirely new roof over the existing bell tower. Based on plans provided by the Architects of the Buildings of France, the monobloc roof was made entirely of composite materials. Transport and lifting were carried out using a single prefabricated piece placed over the tower. The integration, which was particularly successful, enhanced the original structure by adding both balance and aesthetics.



## Our installers in action







## → 10 years: Cladding warranty

FIMO continuously develops its methods and techniques to ensure high standards of performance, safety, and durability in all its solutions.

As the manufacturer of all our composite claddings, we offer a standard 10-year warranty on the facades used in our constructions (chimneys, rooftop structures, visual screens, etc.).

This warranty has been in effect since January 1, 2009.

It reflects our deep confidence in the quality of our in-house manufactured composite products. It is also a guarantee of the longevity and safety of our solutions for our clients.



<https://www.fimoworld.com/it/>

# Chimneys



*Building Sustainable Innovation*






---

## Aix en Provence

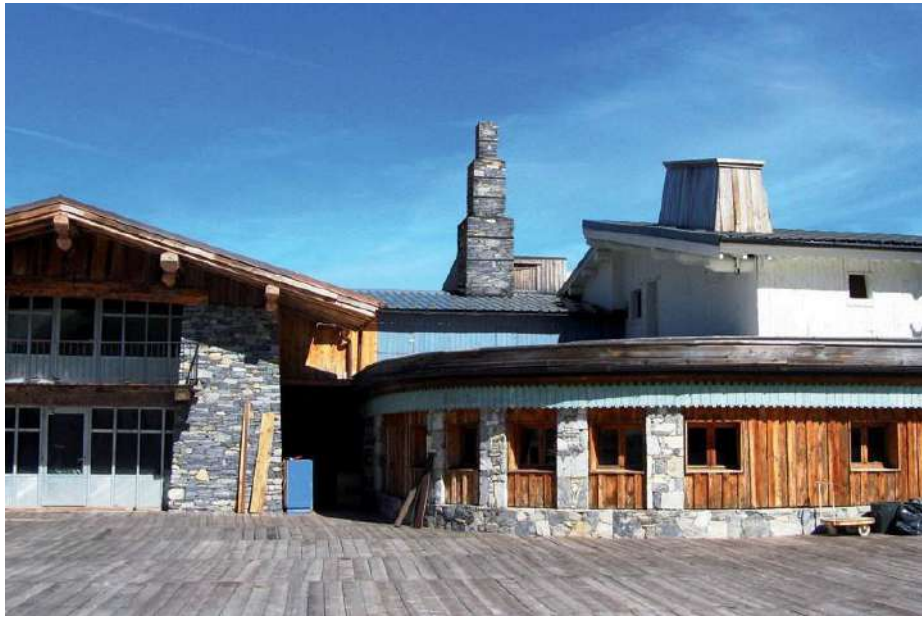
Pitched roof




---

## Le Perreux

Flat roof




---

---

## Val d'isère

Pitched roof




---

---

## Bois-Colombes

Pitched roof






---

---

## Tassin-la-Demi-Lune

Flat roof




---

---

## Montreuil Sous Bois

Flat roof



## Liège (Belgique)

Flat roof



## Courchevel

Pitched roof






---

---

## Genova (Italy)

Flat roof

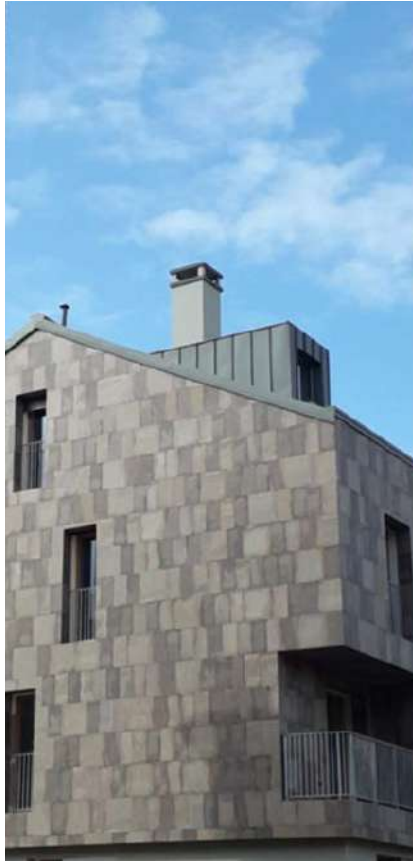



---

---

## Desenzano (Italy)

Flat roof




---

---

## Torino (Italy)

Flat roof




---

---

## Rimini (Italy)

Flat roof






---

---

## Gorizia (Italy)

Flat roof




---

---

## Caorle (Italy)

Flat roof



---

## Venezia (Italy)

Flat roof








---

---

## Besançon

### Rouen Neufchâtel

Pitched roof

---

---

## Saint- Étienne

Flat roof

## Saint- Malo

Pitched roof






---

---

**Paris  
Dijon**  
Flat roof




---

---

**Lyon**  
Flat roof




---

**Aurillac**  
Pitched roof




---

**Rennes**  
Pitched roof



**Meursault**

Pitched roof





# Visual barriers



*Building Sustainable Innovation*



---

Paris



---

Saint - Maurice

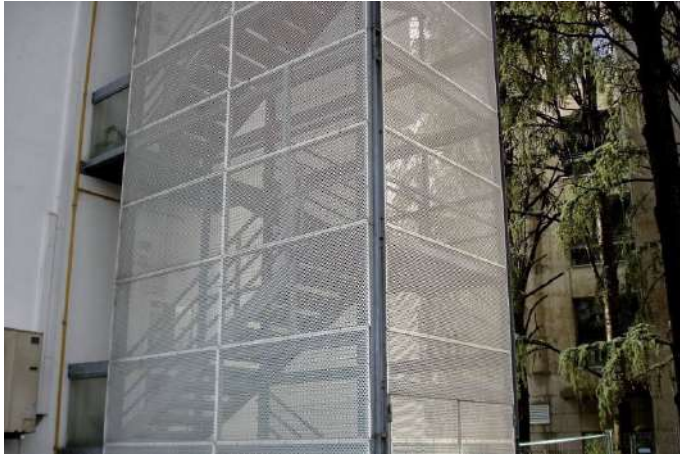


---

**Saint- Nazaire**







---

Lyon



---

Plouguernevel

# Edicules



*Building Sustainable Innovation*



Bordeaux







---

Saint- Étienne






---

Overjise (Belgique)





---

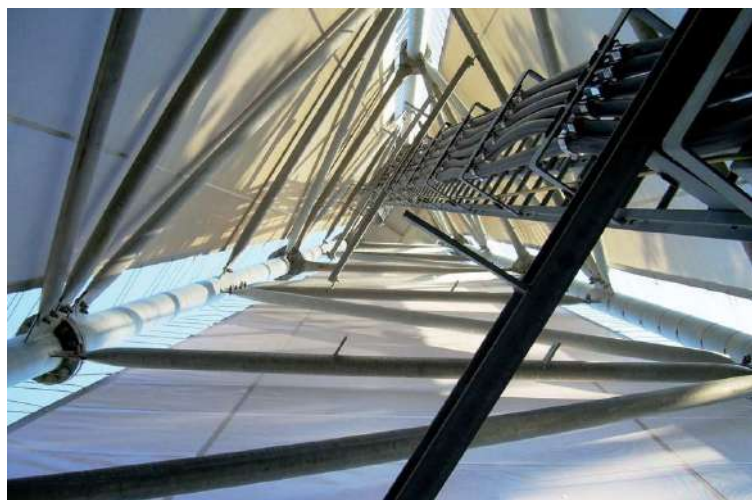
Reims



# Tensioned Fabrics



*Building Sustainable Innovation*



---

Isle - sur - la - Sorgue



---

Saint - Victoret

# Rooftops



*Building Sustainable Innovation*





---

**Lyon**  
Flat roof





## Le Puy- en- Velay

Extension of an old tower



# Louvers







## Castries

Decorative louver made of moulded faux zinc



## Saint- Romain- le - Puy

Wood-moulded louver




---

## Francheville

Smooth louver




---

## Frasne

Smooth louver








---

## Marina di Ravenna (Italy)

Smooth louver








---

## Beaune

Wood-moulded louver




---

## Dornecy

Moulded louver




---

---

## L'Écotay l'Olme

Wood-moulded louver



# Bell Towers, Steeple Tips & Weathercocks



*Building Sustainable Innovation*






---

Montcy - Notre - Dame




---

Tarbes



---

Hoenheim



---

Pfastatt





---

**Mauvezin**





---

Roanne



---

Bourges



La Chapelle- Saint- André



Billy - sur - Oisy




---

---

Berlencourt - le - Cauroy




---

---

Saint- Céneri - le - Gérei Menoux



# Casings



*Building Sustainable Innovation*




---

---

Roanne




---

---

Béziers



---

Bayonne



---

Abeilhan





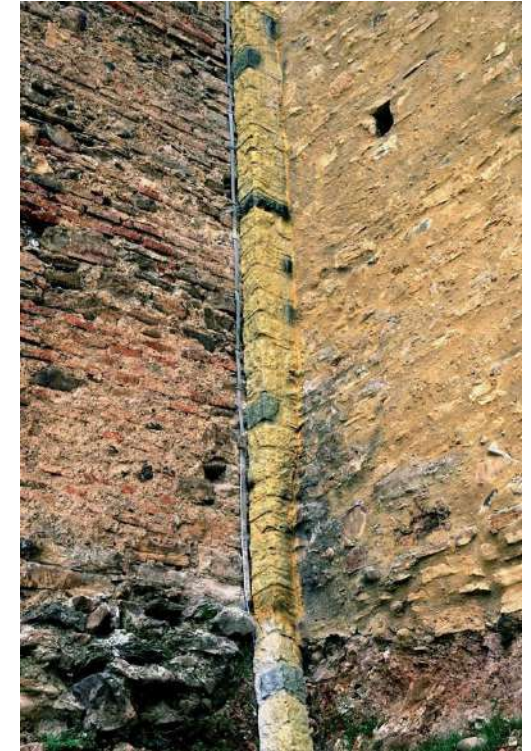

---

Rouen Neufchâtel




---

Mauvezin






---

---

Tresserve




---

---

Besançon





---

**Le Havre**



---

**Montendre**





---

Kingersheim

## Special projects



*Building Sustainable Innovation*




---

Ambilly




---

Mobile mast  
Montauban





---

Guetary



---

Lyon




---

**Meribel**  
**Val d'Isère**




---

**Millau**




---

---

Lyon




---

---

Chessy

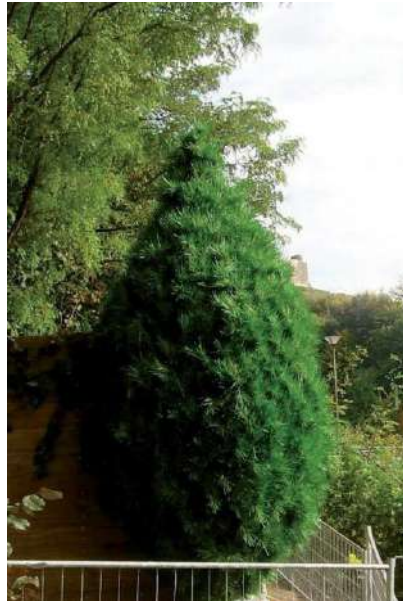





---

---

**Rouen  
Épinal**




---

---

**Marseille  
Cannes**




---

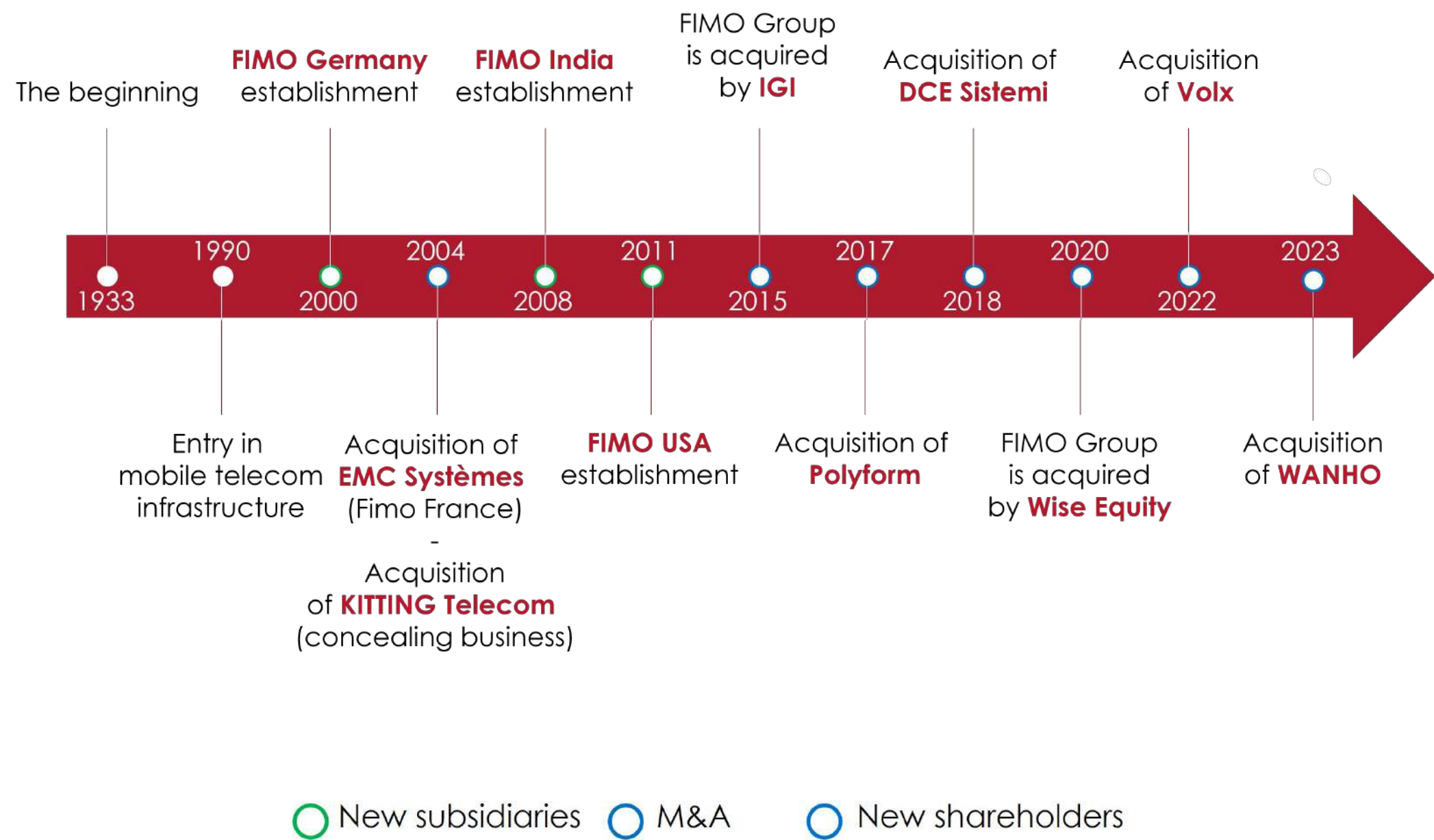
Côte d'Azur




---

Ortona Marittima (CH)

# History







*Building Sustainable Innovation*

<https://www.fimoworld.com/it/>