

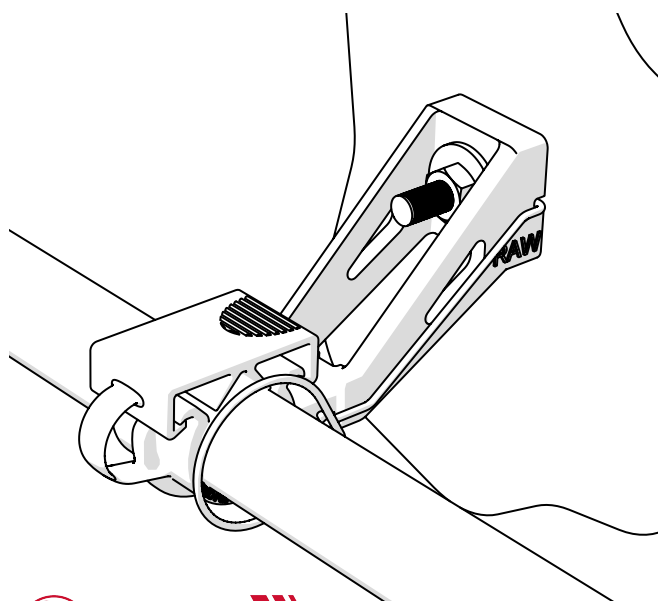
RAW+MF/MFI

Cable Clamps for Radiating Cables

Copyright © Fi.Mo.Tec. S.p.A.
www.fimoworld.com

IST. 043 - REV. 0 - 02/15

INSTALLATION INSTRUCTIONS



⚠️ WARNINGS!

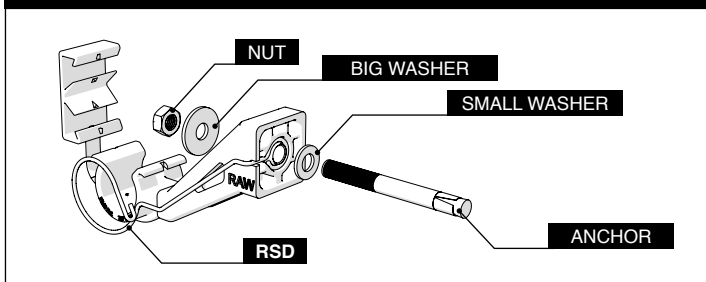
Installation of products must be performed by qualified, trained and experienced personnel. Installation personnel must be correctly and safely equipped. Mounting instructions and warnings must be read prior to installation. Warnings alert you to possible dangers about improper use of product. Failure to observe warnings may result in injury or death to you or others.



Fi.Mo.Tec. S.p.A.
is certificated ISO 9001
and RoHS DIRECTIVES
compliant.

All rights reserved.
Passing on and copying of
this document, use and com-
munication of its contents
not permitted without Fi.Mo.
Tec. S.p.A. prior consent.

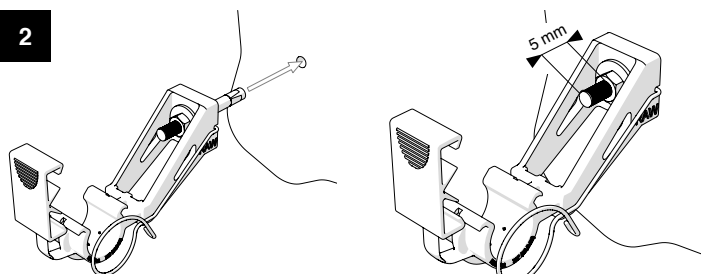
BEFORE INSTALLATION SET RAW AND ITS DEVICES AS PER BELOW IMAGE



1

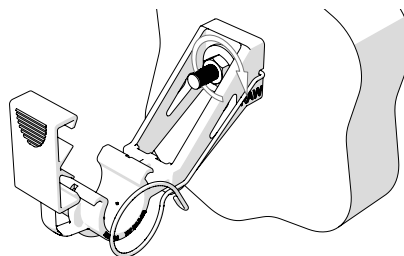
Drill a Ø 6-8mm hole in accordance with anchor MF/MFI Ø - Clean the hole

2



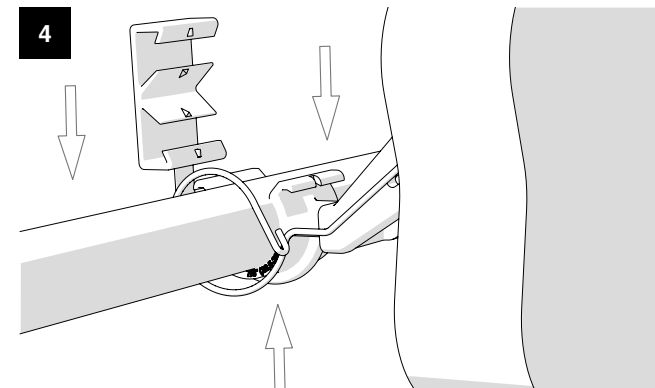
Insert the **MF/MFI** anchor in the hole with the **RAW** clamp, leaving 5mm prominent from nut. If necessary use a hammer to facilitate insertion

3



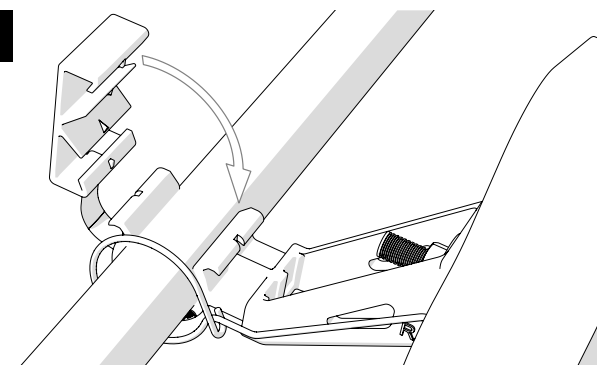
Tighten the nut (4-5 Nm) for complete lock

4



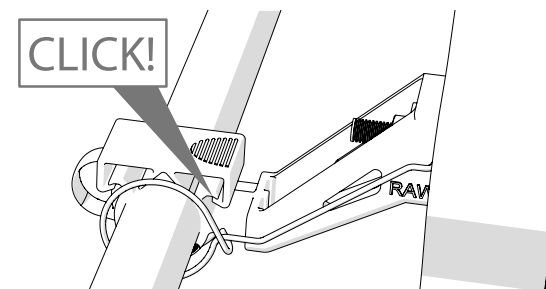
Insert cable into **RSD** security device*, and then insert cable into **RAW** clamp contrasting from below

5



Close **RSD** around the cable*, place **RAW** outer bracket end

6



Close **RAW** bracket over cable
with a **CLICK!** at inner end

*Where **RSD** provided

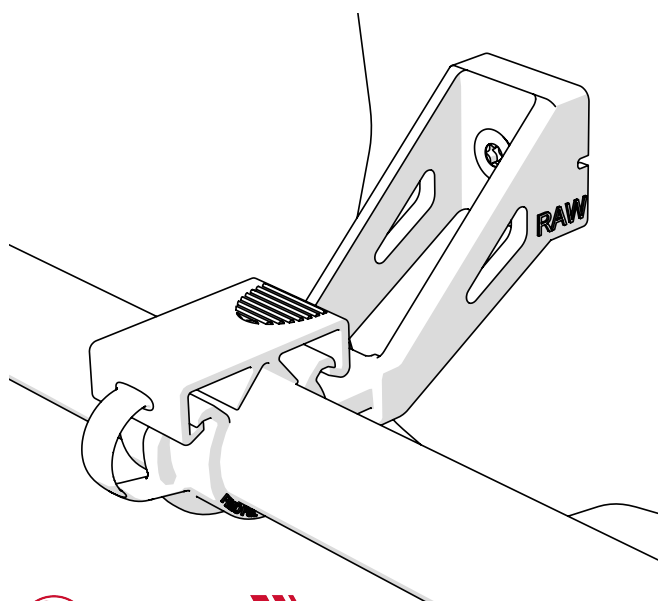
RAW+R8-80/R10-80

Cable Clamps for Radiating Cables

Copyright © Fi.Mo.Tec. S.p.A.
www.fimoworld.com

IST. 043 - REV. 0 - 02/15

INSTALLATION INSTRUCTIONS



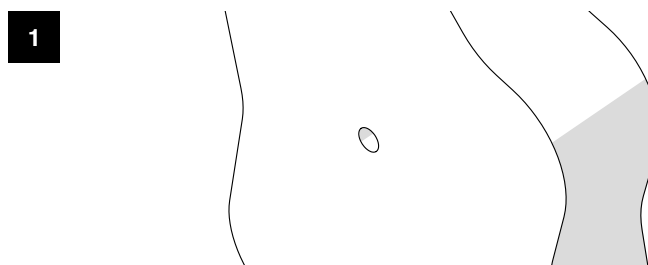
⚠️ WARNINGS!

Installation of products must be performed by qualified, trained and experienced personnel. Installation personnel must be correctly and safely equipped. Mounting instructions and warnings must be read prior to installation. Warnings alert you to possible dangers about improper use of product. Failure to observe warnings may result in injury or death to you or others.

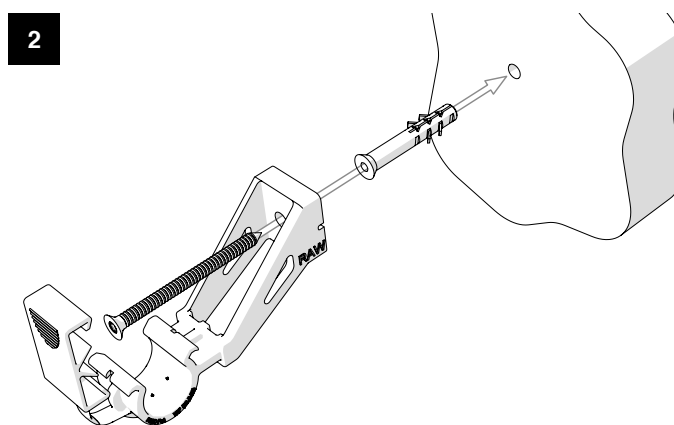


Fi.Mo.Tec. S.p.A.
is certificated ISO 9001
and RoHS DIRECTIVES
compliant.

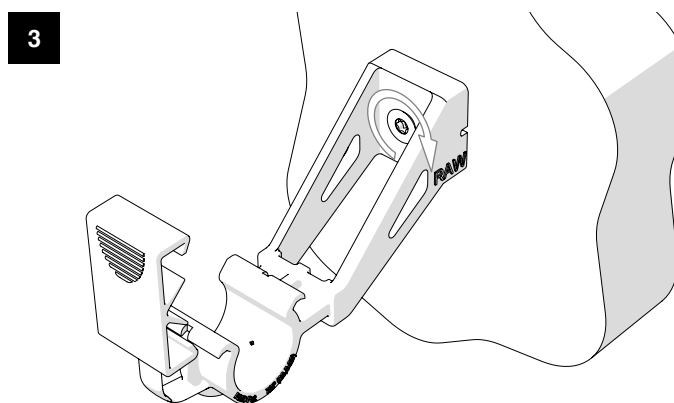
All rights reserved.
Passing on and copying of
this document, use and com-
munication of its contents
not permitted without Fi.Mo.
Tec. S.p.A. prior consent.



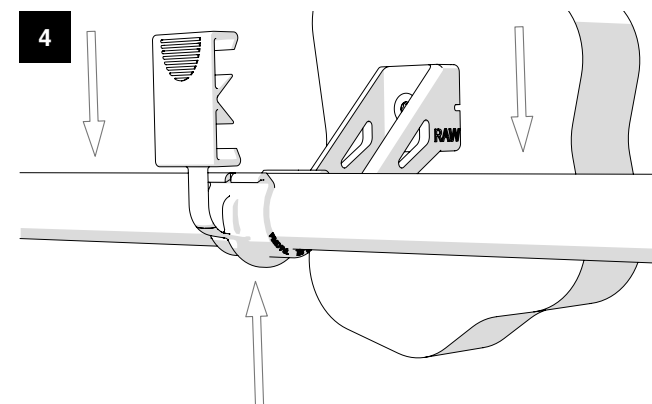
1 Drill a Ø 8-10mm hole in accordance with plug Ø - Clean the hole



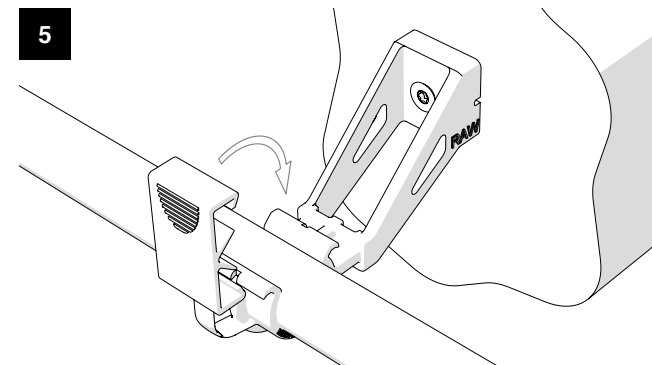
2 Insert R8-80 / R10-80 plug in the hole



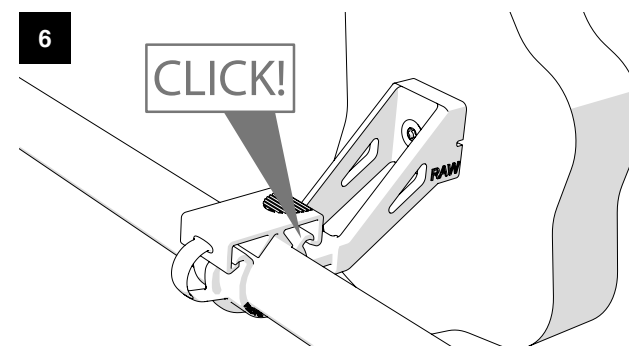
3 Tighten the screw (4-5 Nm) for complete lock



4 Insert cable into RAW clamp contrasting from below



5 Place RAW outer bracket end



6 Close RAW bracket over cable with a **CLICK!** at inner end