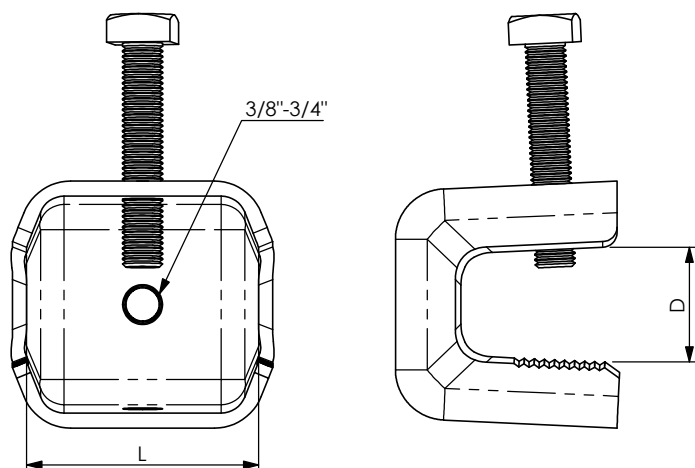


PRODUCT DATA SHEET



A) SPECIFICATIONS

Stainless steel

B) RESISTANCE TESTS

UV Test BS-ISO 105-B06

Vibration test conforming to UNI 60068-2-6

C) PACKAGING INFORMATION

Packing in boxes.

Label indicating:

product code, article, quantity,

production batch,



FIMO logo and figure.

(Customer code on request).

D) MOUNTING INSTRUCTIONS

On request

PICTURE	CODE	ARTICLE	D		L	FOR PROFILE	BAG	BOX	WEIGHT
			mm	in					
	61 1523 3038	MDM 3/8" V	3 - 22	.118 - .866	45		10	100	190
	61 1523 2019	MDM 3/4" S	3 - 22	.118 - .866	45		10	100	170
	61 1523 1938	MDM 3/8" I (includes IS 3/4" - 3/8")	3 - 22	.118 - .866	45		10	100	210

RI	DATE	DR	DATE	AP	Description:
02					MDM - Clamps
01					
00	17/06/2015	E.B.	17/06/2015	A.V.	
1 ST EMISSION					
					Use: Heavy Duty Enbloc bidirectional clamp with a 3/8" locking screw. Available version with 3/8" threaded holes and 3/4" holes, for universal usage. A specific reduction insert (IS 3/4" – 3/8") is foreseen for the version with 3/4" holes. The version with 3/4" holes can be used in combination with SIC clamps.

FI.MO.TEC. S.p.a. reserves the right to modify the technical specifications without prior notice, according to the technical progress
Copyright FI.MO.TEC. S.p.a. All rights reserved.