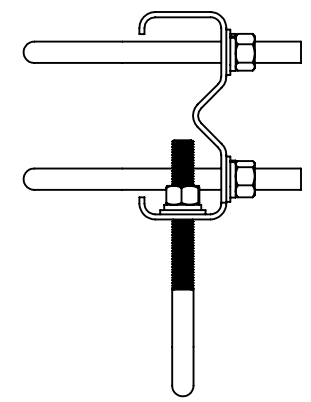
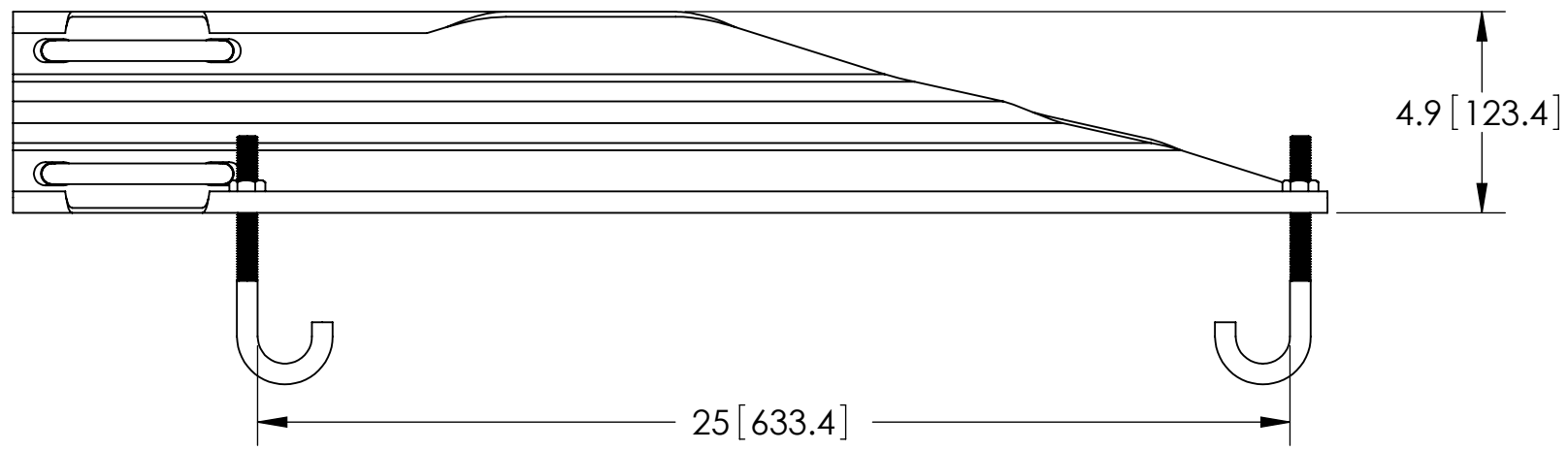
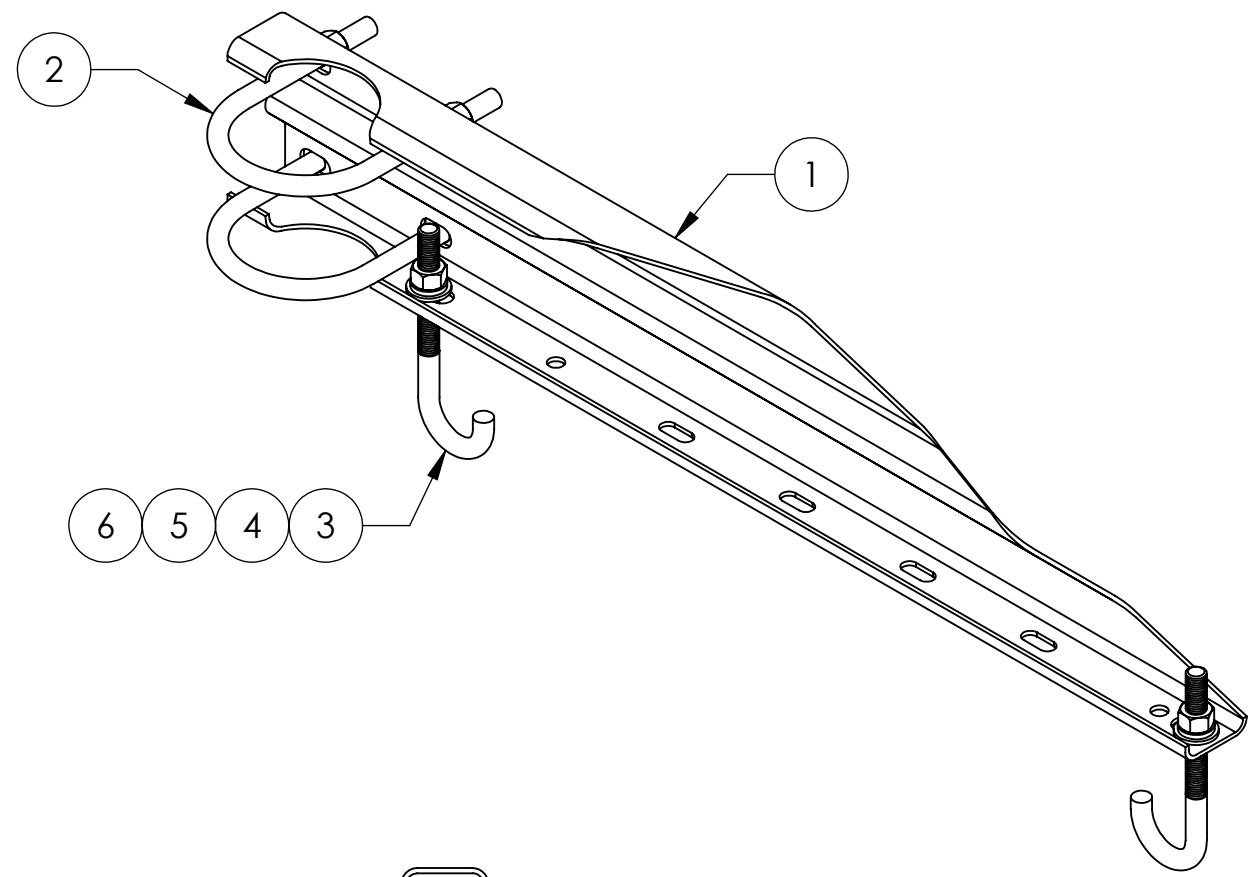
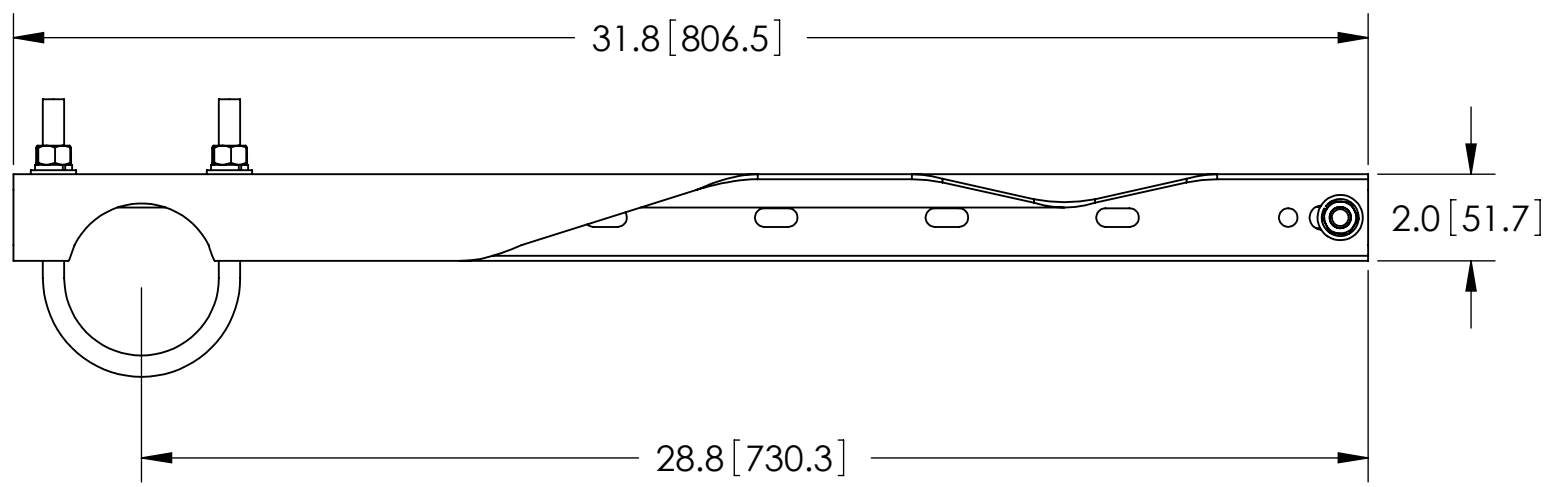



ITEM	PART NO.	DESCRIPTION	QTY.	WEIGHT
1	WBLB243.08	24" WAVEGUIDE BRIDGE SUPPORT BRACKET	1	7.14 LBS
2	GUB-4356	1/2" X 3-5/8" X 6" GALV U-BOLT KIT	2	0.83 LBS
3	WBJB6	1/2" J-BOLT	2	0.41 LBS
4	GWF-04	1/2" GALV FLAT WASHER	2	0.01 LBS
5	GWL-04	1/2" GALV LOCK WASHER	2	0.01 LBS
6	GN-04	1/2" GALV HEX NUT	2	0.02 LBS

REVISIONS				
REV.	ZONE	DESCRIPTION	BY	DATE
A		INITIAL RELEASE	WLJ	11/11/99
B		PART NUMBER CHANGE	MLL	12/29/99
C		REVISED & REDRAWN	JTS	08/22/00
D		REVISED & REDRAWN	MA	05/07/01
E		REDESIGNED FOR FORM, FIT & FUNCTION	CAM	02/11/02
F		NEW DESIGN WITH WBLB243.06 CHANNEL	ACG	10/08/02
G		REPLACE WBLB243.06 WITH WBLB243.08	ACG	01/30/08
H		CHANGE DIMENSION CALLOUTS	MSM	2/13/08
J		CORRECT PART NUMBER CALL-OUT	MSM	08/08/08



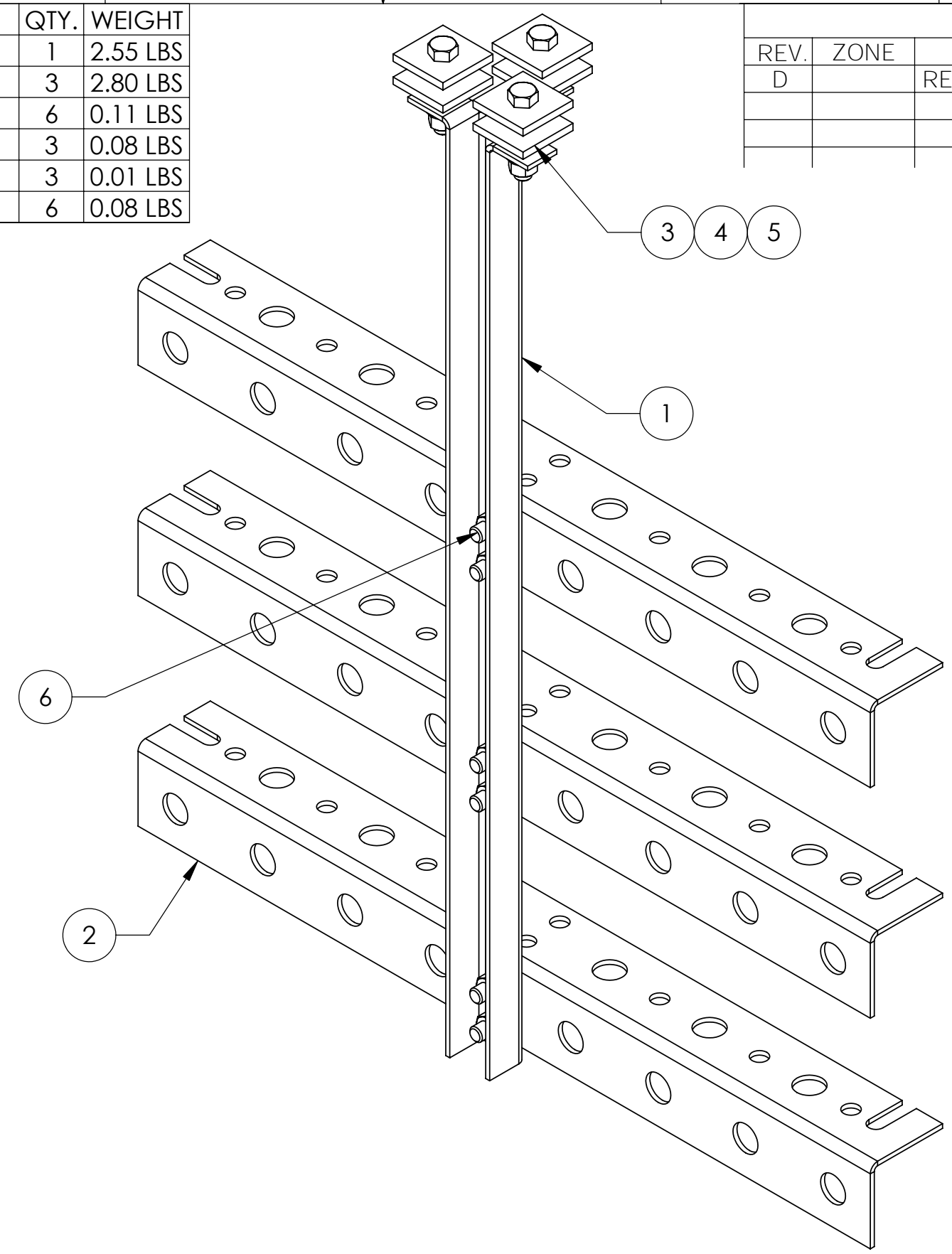
NOTES:
 1. ALL METRIC DIMENSIONS ARE IN BRACKETS.

These drawings and specifications are proprietary property and may be used only for the specific purpose authorized in writing. ALL DIMENSIONS ARE IN INCHES U.O.S. TOLERANCES UNLESS OTHERWISE SPECIFIED: .X = ± .06 ANGLES ±2' .XX = ± .03 FRACTIONS ±1/32 .XXX = ± .010 REMOVE BURRS AND BREAK EDGES .005 DO NOT SCALE THIS PRINT	DRAWN BY: ACG	SHEET: 2 of 4	PART NUMBER: FM-WBLB243
	CHECKED BY: TP	SCALE: NTS	DESCRIPTION: 24" WAVEGUIDE BRIDGE SUPPORT KIT
	DATE: 03/08/05	MATERIAL: A36	DRAWING TYPE: ASSEMBLY DRAWING
	REVISION: J	FINISH: GALV A123	WEIGHT: 10.07 LBS



ITEM	PART NO.	DESCRIPTION	QTY.	WEIGHT
1	WBT243.01	VERTICAL TRAPEZE SECTION	1	2.55 LBS
2	WBT243.02	HORIZONTAL TRAPEZE SECTION	3	2.80 LBS
3	MT-387	SQUARE WASHER, 1½" X 1½" W/ 7/16" HOLE	6	0.11 LBS
4	GB-03205	3/8" X 2" GALV BOLT KIT	3	0.08 LBS
5	GWF-03	3/8" GALV FLAT WASHER	3	0.01 LBS
6	GB-03105	3/8" X 1" GALV BOLT KIT	6	0.08 LBS

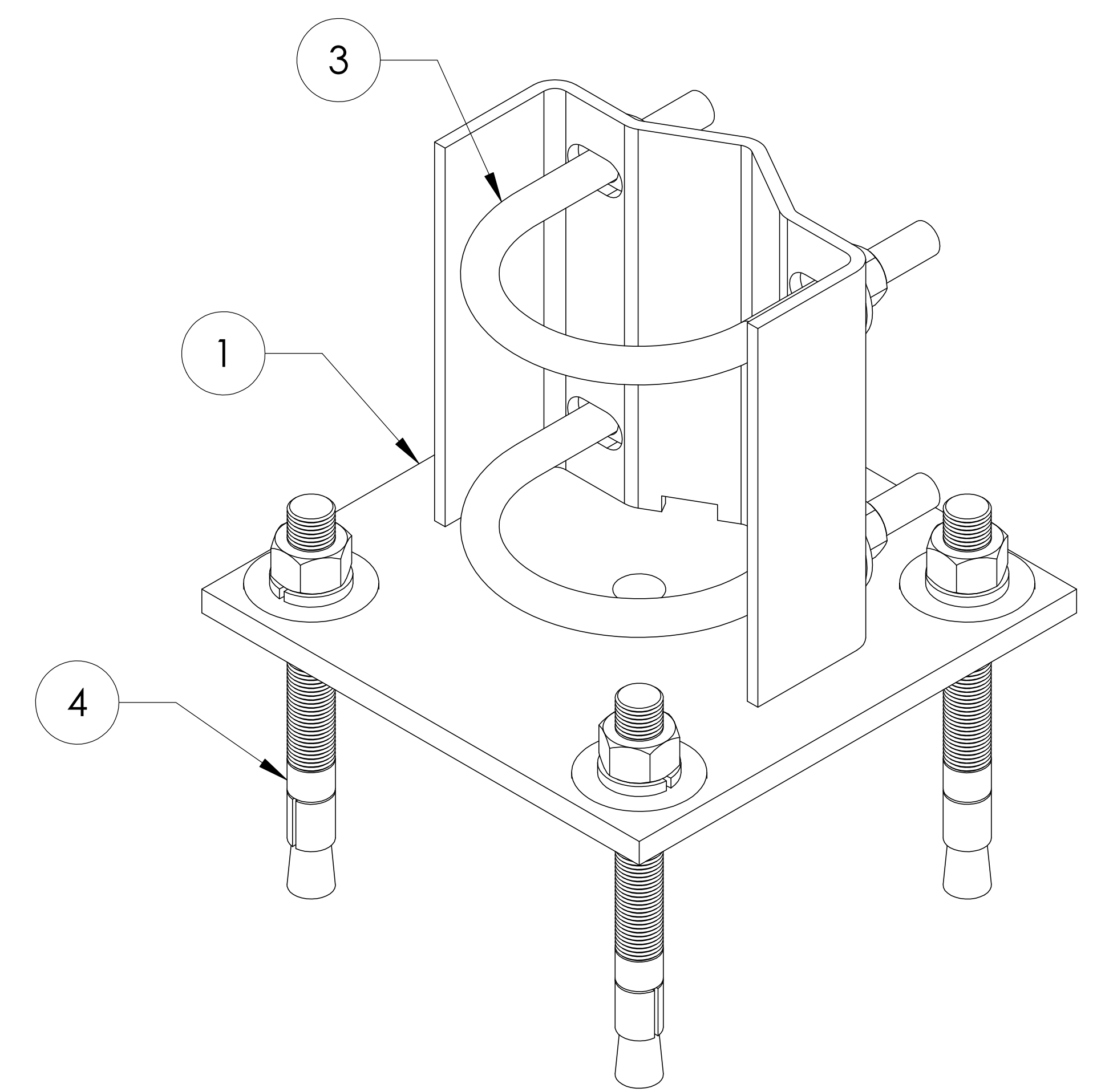
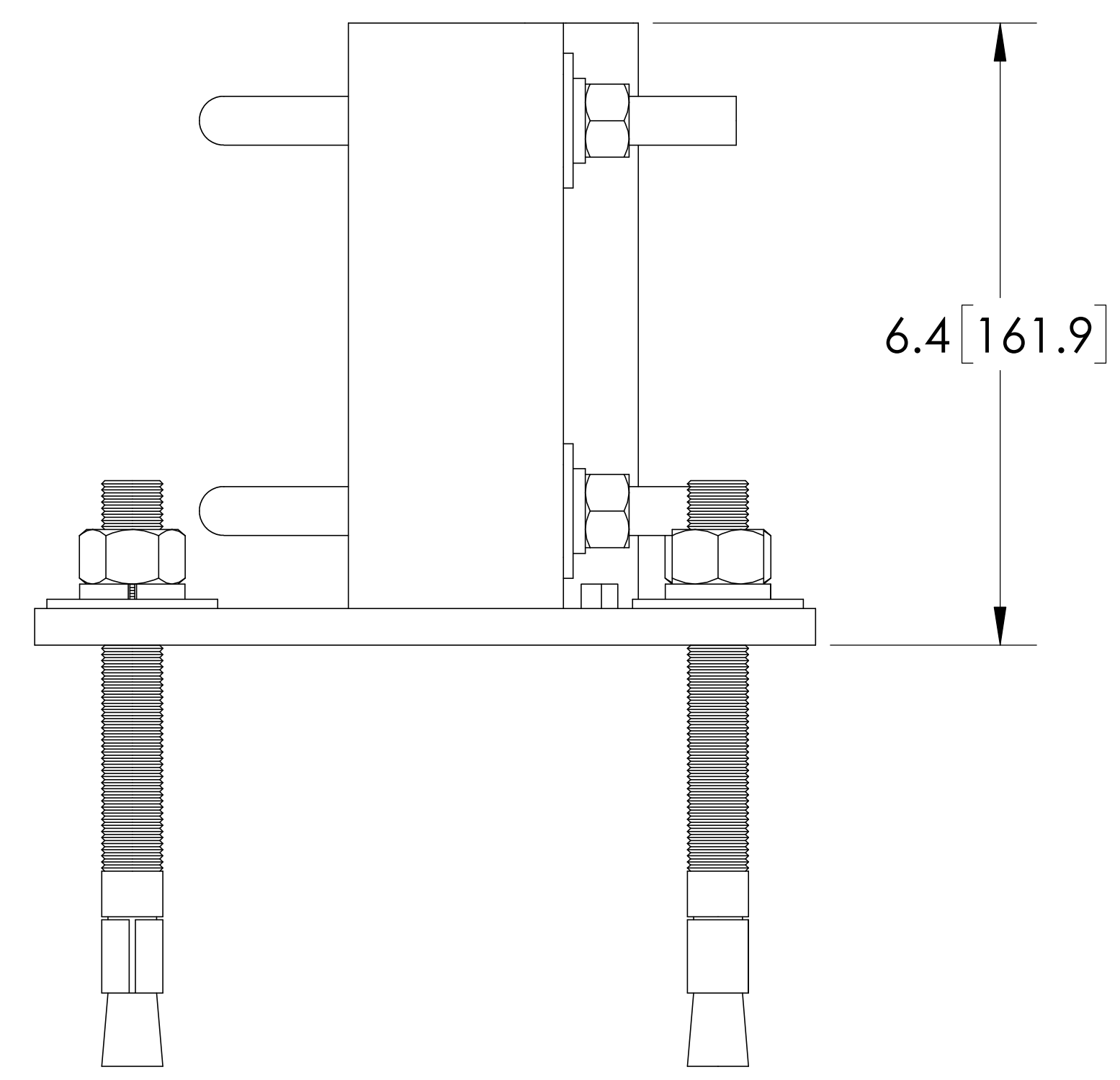
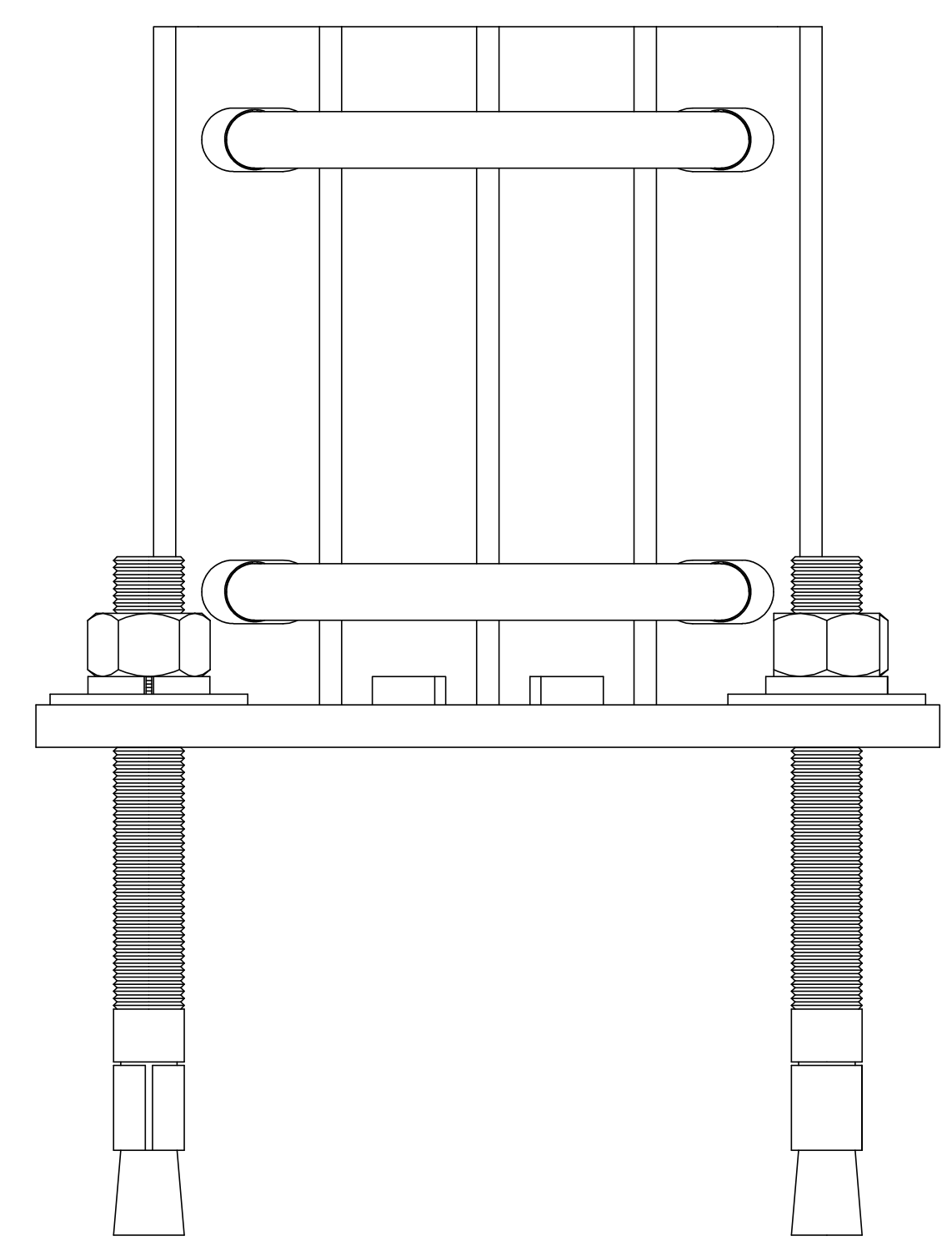
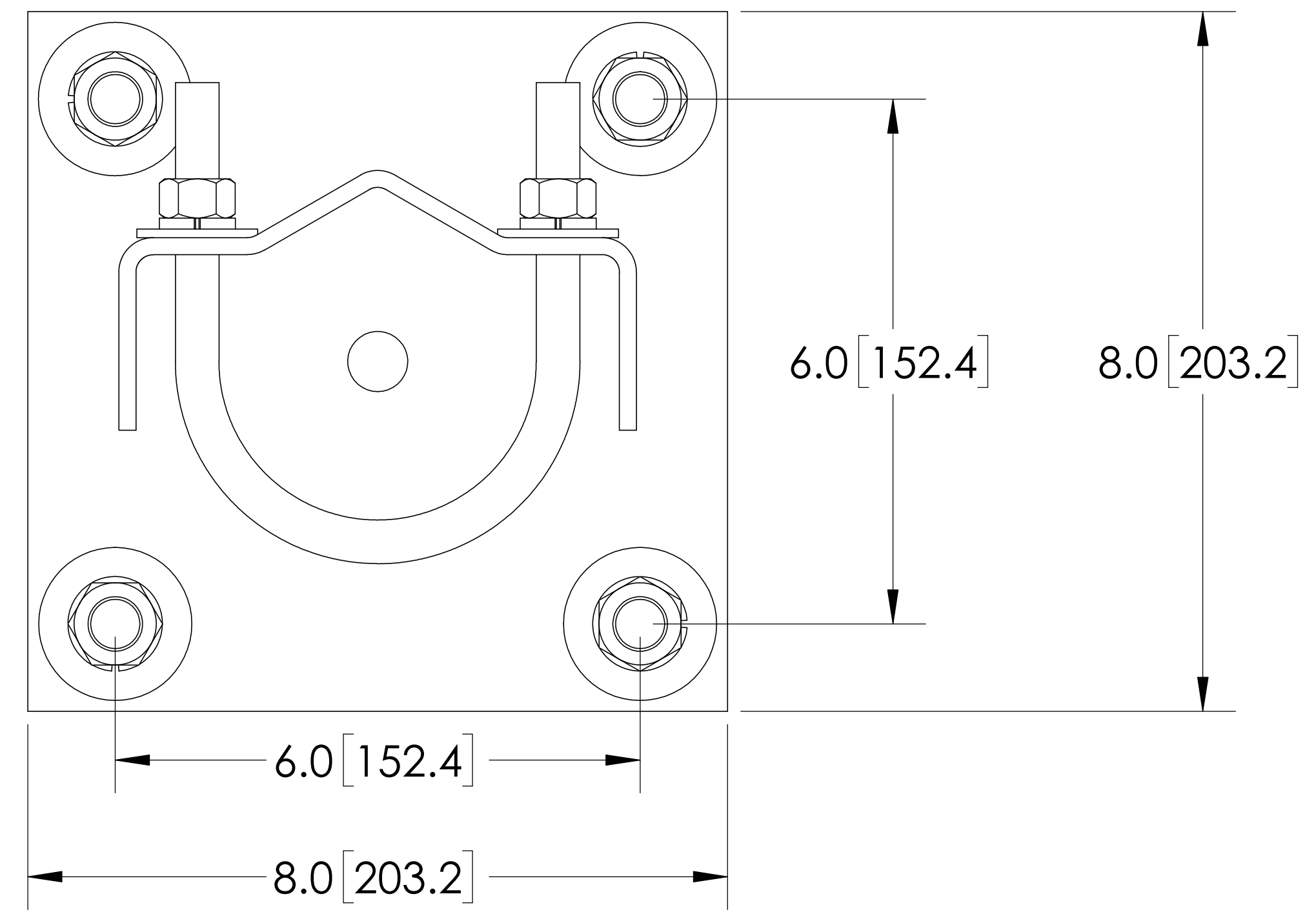
REVISIONS				
REV.	ZONE	DESCRIPTION	BY	DATE
D		REVISED	DI	1/26/05



<p>These drawings and specifications are proprietary property and may be used only for the specific purpose authorized in writing.</p> <p>ALL DIMENSIONS ARE IN INCHES U.O.S. TOLERANCES UNLESS OTHERWISE SPECIFIED: .X = .06 ANGLES 2° .XX = .03 FRACTIONS 1/32 .XXX = .010</p> <p>REMOVE BURRS AND BREAK EDGES .005</p> <p>DO NOT SCALE THIS PRINT</p>	DRAWN BY: DI	SHEET: 3 of 4	PART NUMBER: FM-WBT243
	CHECKED BY: TP	SCALE: NTS	DESCRIPTION: TRAPEZE KIT
	DATE: 1/27/05	MATERIAL: A36	DRAWING TYPE: ASSEMBLY DRAWING
	REVISION: D	FINISH: GALV A123	WEIGHT: 12.43 LBS

ITEM	PART NO.	DESCRIPTION	QTY.	WEIGHT
1	WBBS2.01	FOOT WELDMENT	1	9.81 LBS
2	WBBSH	HARDWARE KIT (ITEM# 3 & 4)	1	
3	GUB4355	1/2"-13 UNC X 3-5/8" X 5" GALV U-BOLT KIT	2	0.72 LBS
4	MT280	5/8" X 6" WEDGE ANCHOR KIT	4	0.64 LBS

REVISIONS				
REV.	ZONE	DESCRIPTION	BY	DATE
A		INITIAL RELEASE	ACG	10/18/13



- NOTES:
1. ALL METRIC DIMENSIONS ARE IN BRACKETS.
 2. STAMP PART IDENTIFICATION NUMBER.
 3. WELDING WORKMANSHIP PER AWS D1.1, TABLE 6.1.

These drawings and specifications are proprietary property and may be used only for the specific purpose authorized in writing.

ALL DIMENSIONS ARE IN INCHES U.O.S.
TOLERANCES UNLESS OTHERWISE SPECIFIED:
.X = ± .06 ANGLES ±2'
.XX = ± .03 FRACTIONS ±1/32
.XXX = ± .010

REMOVE BURRS AND BREAK EDGES .005

DO NOT SCALE THIS PRINT

DRAWN BY: ACG	SHEET: 1 of 1	PART NUMBER: FM-WBBS2
CHECKED BY: MKV	SCALE: NTS	DESCRIPTION: BASE SHOE FOR Ø 3-1/2" O.D. PIPE
DATE: 10/20/21	MATERIAL: ASTM A1011/A1018 Gr.36	DRAWING TYPE: ASSEMBLY DRAWING
REVISION: A	FINISH: ASTM A123	
	WEIGHT: 14.18 LBS	

