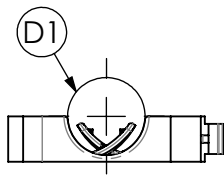
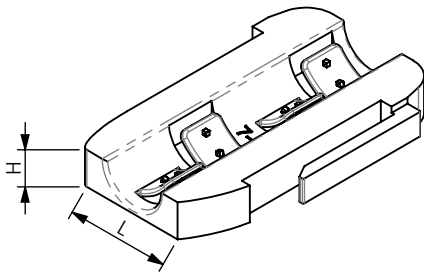
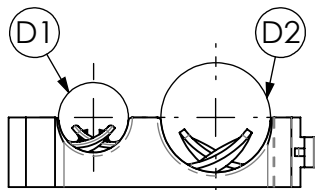
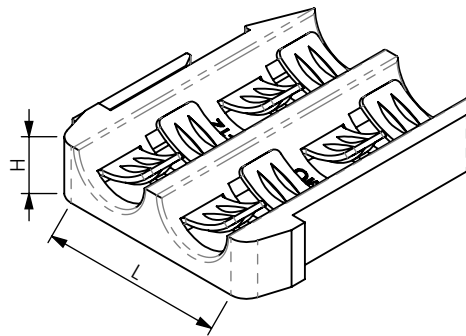


PRODUCT DATA SHEET

SAS M



SAT M



A) SPECIFICATIONS

P.A. U.V. resistant

B) RESISTANCE TESTS

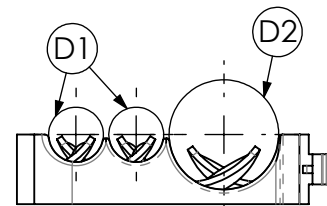
Operating temperature: $-30^{\circ}\text{C} + 120^{\circ}\text{C}$

C) PACKAGING INFORMATION

Packing in boxes.
Label indicating:
product code, article, quantity,
production batch,
FIMO logo and figure.
(Customer code on request).

D) MOUNTING INSTRUCTIONS

On request



CODE	ARTICLE	ø D1	ø D2	L	H	BAG	BOX	WEIGHT (gr)
6133120007	SAS M 7	4-7	-	12	6	20	100	5,2
6133120010	SAS M 10	7-10	-	12	6	20	100	3,6
6133070407	SAT M 7x2	4-7	-	22	6	20	100	7,4
6133070409	SAT M 9x2	6-9	-	22	6	20	100	6,4
6133120212	SAT M 12x2	8-12	-	34	9	20	100	6.1
6133120214	SAT M 14x2	9-14	-	34	9	20	100	11
6133120914	SAT M 1x14+1x9	6-9	9-14	34	9	20	100	12
6133122714	SAT M 1x14+2x7	4-7	9-14	34	9	20	100	12
6133120310	SAT M 10x3	7-10	-	46	7	20	100	8

RI	DATE	DR	DATE	AP	Description: SAS M - Single Saddles for a Wide Range of Diameters SAT M - Double Saddles for a Wide Range of Diameters The SAS M and SAT M saddles are supplied with the OX cable clamps and are used for small diameter cables. The innovative design of the saddles allowsthe fixing of cables the a wide range of diameters. The two saddles fitting corresponds to the diameter of a wide range of cables.
02					
01					
00	05/03/24	G.S.	05/03/24	A.V.	
1 ST EMISSION					