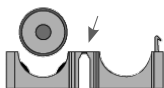
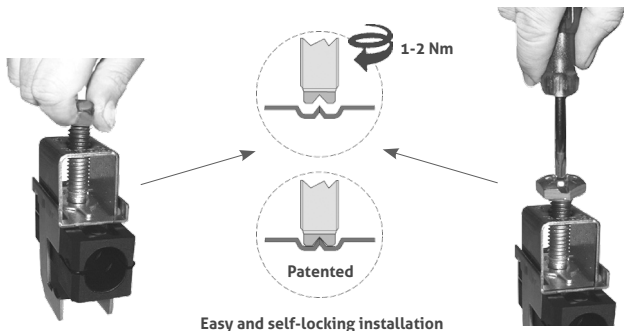
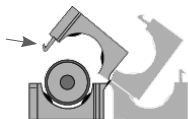


mRF

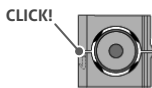
Self-locking mini cable clamps



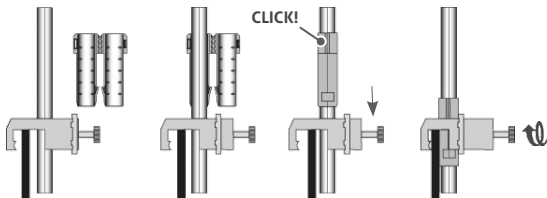
Saddles with flexible hinge



Pre-fixing hooks



Firmly closed saddle onto the cable



ST 0027-4/11 - A6 - REV. 0

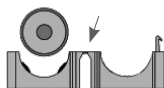
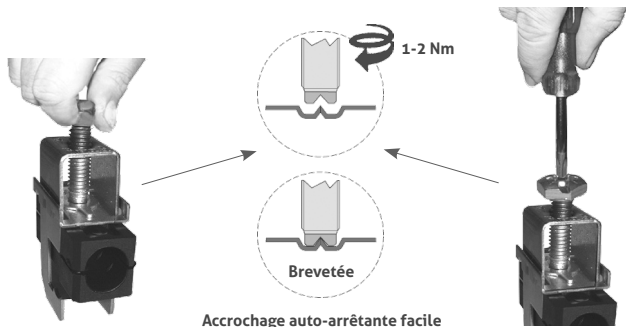


All rights reserved.
 Passing on and copying of this document,
 use and communication of its contents not
 permitted without Fi.Mo.Tec. S.p.A. prior consent.



mRF

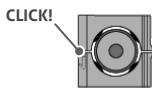
Mini fixations auto-arrêtantes



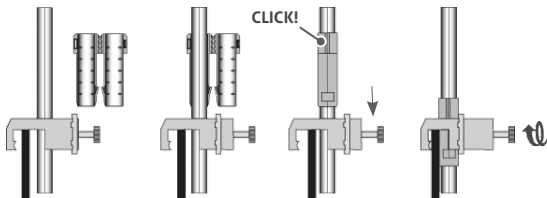
Garnitures avec
charnière flexible



Crochet pour pré-fixations



Garniture solidement
fermée sur le câble



ST 022-4/11 - A6 - REV. 0



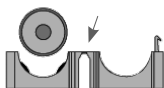
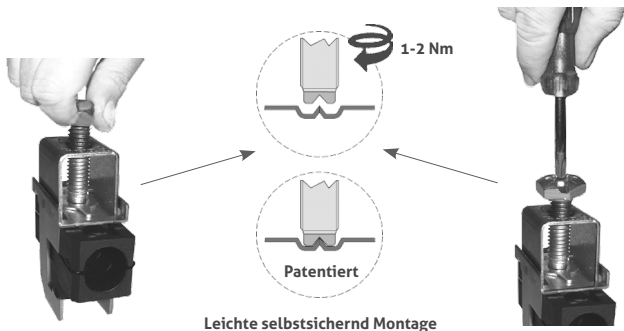
All rights reserved.

Passing on and copying of this document,
use and communication of its contents not
permitted without Fi.Mo.Tec. S.p.A. prior consent.



mRF

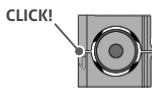
Selbstsichernde Mini-Schellen



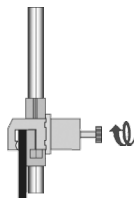
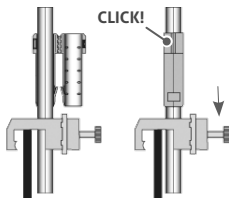
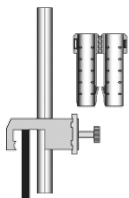
Wannen mit Scharniergelenk



Vorbefestigung durch Haken



Wanne auf Kabel fertig verschlossen



ST 0027-4/11 - AG - REV. 0



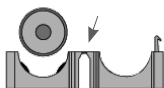
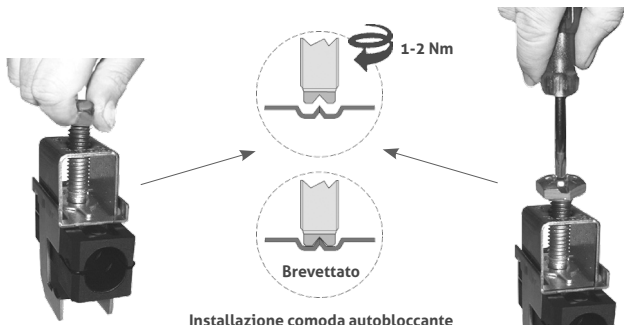
All rights reserved.

Passing on and copying of this document, use and communication of its contents not permitted without Fi.Mo.Tec. S.p.A. prior consent.

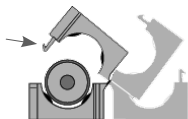


mRF

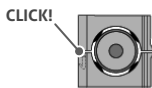
Mini fissacavi autobloccanti



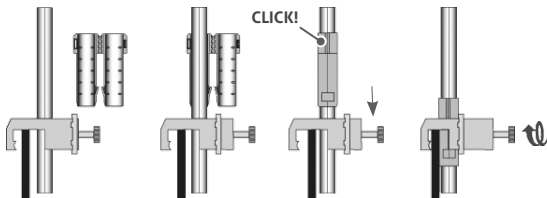
Selle con cerniera flessibile



Ganci per pre-fissaggio



Sella chiusa sicura sul cavo



ST 0027-4/11 - A6 - REV. 0



All rights reserved.

Passing on and copying of this document, use and communication of its contents not permitted without Fi.Mo.Tec. S.p.A. prior consent.



Setting Installation Standards